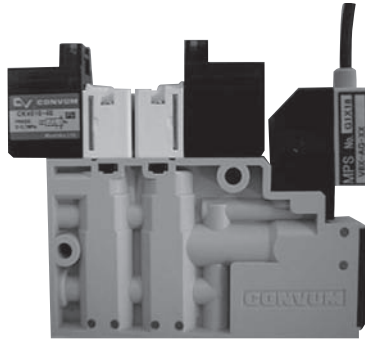


10mm width vacuum ejector unit MC52 CONVUM



- Compact type and light weight
10 mm width body, resin body
- Analog vacuum sensor mounted
- High blow-off flow
50L at 0.5MPa
- Can be mounted on manifold
Up to 8 units

How to order

In case of manifold

MC52 ① M ② 05 ③ H ④ S ⑤ V8 ⑥ S ⑦ 4 ⑧ B ⑨ 3 ⑩ 1 ⑪ 2 ⑫ L ⑬ G

① Body type	
S	Single unit
M	Manifold unit

② Nozzle size	
05	φ0.5
07	φ0.7
10	φ1.0

③ Maximum vacuum pressure (kPa)	
H	-87

④ Supply pressure (MPa)	
S	0.5
R	0.35

Note : ②③④ applicable model

②	③	④	
		S	R
05	H	○	○
07	H	○	○
10	H	○	○

⑤ Pressure sensor				
	Sensor type	Pressure	Display	Output
V8	MPS-V8	Vacuum	Without	Analog output DC1 ~ 5V

⑥ Exhaust type	
S	Silencer

⑦ Solenoid valve voltage	
4	DC24V

⑬ Port thread	
N	NPT1/8
G	G1/8 (BSPP)
blank	Rc1/8 (BSPT)

Note: NPT and G threads are made-to-order.

⑫ Position of body	
R	Palced right
L	Place left
Blank	When ⑨ & ⑪ are the same

⑪ Number of bodies			
1	1 unit ★	5	5 units
2	2 units	6	6 units ★
3	3 units	7	7 units ★
4	4 units	8	8 units ★

Note: 1, 6, 7 & 8 are made-to-order, consult with us.

⑩ Number of block plates			
0	none	4	4 units
1	1 unit	5	5 units ★
2	2 units	6	6 units ★
3	3 units	7	7 units ★

Note: 5, 6 & 7 are made-to-order, consult with us.

⑨ Number of manifold units			
1	1 unit ★	5	5 units
2	2 units	6	6 units ★
3	3 units	7	7 units ★
4	4 units	8	8 units ★

Note: 1, 6, 7 & 8 are made-to-order, consult with us.

⑧ Solenoid valve air passage	
B	Normally Closed (N.C)

Maintenance parts

- Solenoid valve (with gasket and mounting screws)
CKV010-4E
Note) Refer to P58 for details
- Pressure sensor (with setting screws)
MPS - V8 - MC5
Note) Please check P382 for details
- Filter element
MC5 - E
- Silencer element
MC5 - S
- Manifold block plate
MC5 - MM

- Manifold base

MC5-M 1

Number of manifold units			
1	1 unit	5	4 units
2	2 units	6	5 units
3	3 units	7	6 units
4	4 units	8	7 units

Note: With mounting screws and plugs.
Note: 1, 6, 7 & 8 are made-to-order.

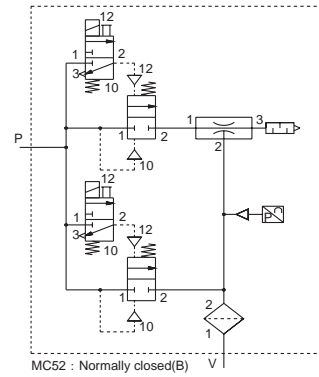
Specifications

Description	Unit	MC52□05		MC52□07		MC52□10	
		HS	HR	HS	HR	HS	HR
Fluid		Non-lubricated air / non-corrosive gas					
Ambient temperature	°C	0 ~ 60(without freezing)					
Operating pressure range	MPa	0.2 ~ 0.55					
Blow-off flow	ℓ /min (ANR)	50 (at: 0.5)					
Solenoid valve air passage		Normally closed (N.C)					
Filter element filtration	μ m	350					
Nozzle size	φ mm	0.5		0.7		1.0	
Nominal pressure	MPa	0.5	0.35	0.5	0.35	0.5	0.35
Vacuum (air) flow	ℓ /min (ANR)	5.5	4	11	9	20	15
Max. vacuum pressure	kPa	-87					
Air consumption	ℓ /min (ANR)	10		22.5		55	
Mass	Single type	81					
	Manifold type(1 unit)	77					

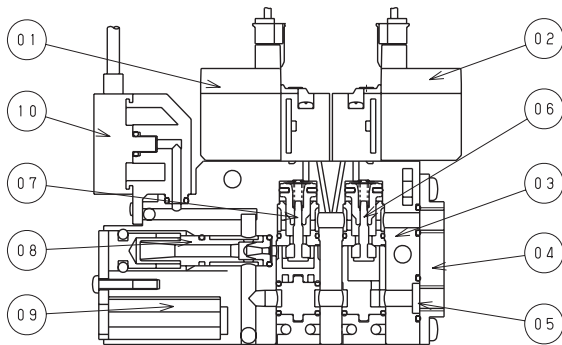
Solenoid valve specifications

Description	Unit	CKV010-4E
Solenoid valve air passage		Normally closed(N.C)
Operating voltage	V	DC24
Allowable voltage tolerance	%	± 10
Power consumption	W	1
Grade of insulation		B class
Manual override operation		Non-lock push button
Display - Surge killer		LED · diode
Cable		Lead wire with connector (300mm)

Symbol



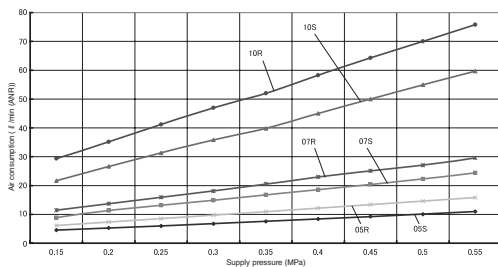
Construction



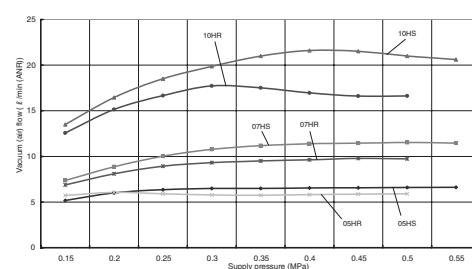
Parts	Part name	Material
1	Solenoid valve	-
2	Solenoid valve	-
3	Body	PA
4	Manifold base	Aluminium
5	Filter element	PVF
6	Blow-off poppet valve	Aluminium, SUS, NBR, FKM, PBT
7	Vacuum poppet valve	Aluminium, SUS, NBR, FKM, PBT
8	Nozzle kit	Aluminium, NBR
9	Silencer element	PVF
10	Pressure sensor	-

Performance charts

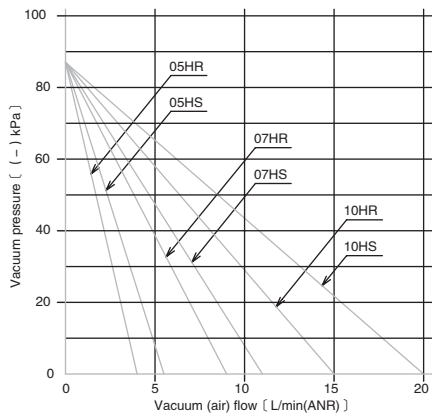
Air consumption characteristics



Maximum vacuum (air) flow characteristic



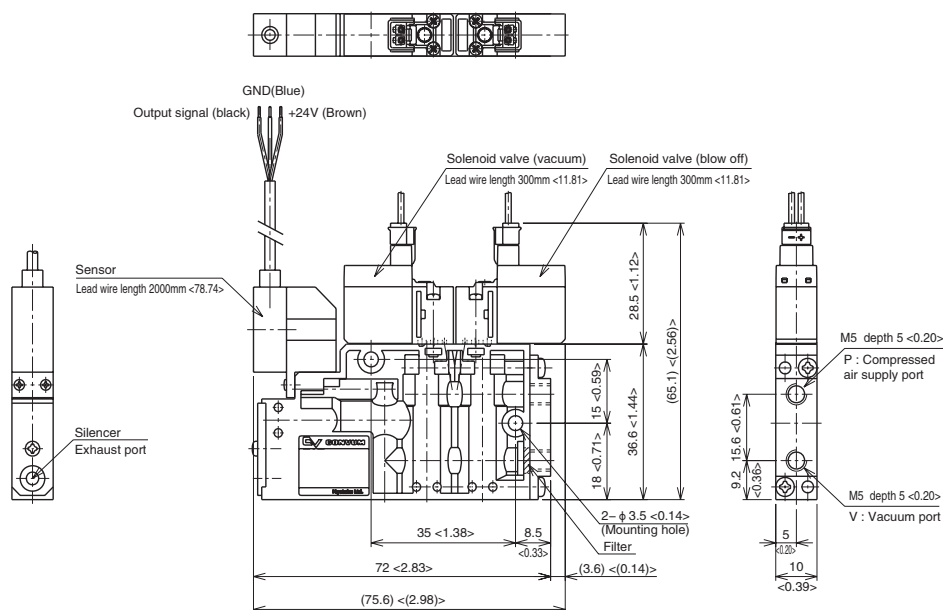
— Vacuum (air) flow-vacuum pressure characteristic —



Dimensions

Unit : mm <inch>

Single unit type



Manifold type

