

- SC1
- SC2
- SC3
- MC22
- MC72
- CCV
- MCV
- CV
- CVA2
- EC1
- MCA**
- HDV
- HFV
- CVZ



Compact, light weight

Light weight with resin body
Weight: 16.8g



※ MCA-05/07-TTT type

Various piping methods



Push-in connector type



Screw type



Push-in connector type+ screw type

Suction cup direct mounting



How to Order

MCA — 05 H S — T T T
 ① ② ③ ④ ⑤ ⑥

① Nozzle Type

Symbol	Nozzle size [mm]
05	0.5
07	0.7
10	1.0
13	1.3

② Maximum Vacuum Pressure [kPa]

Symbol	Type	Vacuum pressure
H	High vacuum type	-87
L	High flow type	-53

③ Rated Pressure [MPa]

S	0.5
R	0.35

④ Supply Port(P)

T	φ 6 push-in connector
R	Male screw (R1/8)

⑤ Vacuum Port (V)

T	φ 6 push-in connector
R	Male screw (R1/8)

⑥ Exhaust Port (E)

T	φ 6 push-in connector : for 05, 07 nozzle φ 8 push-in connector : for 10, 13 nozzle
R	Female screw (Rc1/8) : for 05, 07 nozzle Female screw (Rc1/4) : for 10, 13 nozzle

※ ①②③ Applicable Models

①	②	③	
		S	R
05	H	○	×
	L	○	×
07	H	○	○
	L	○	×
10	H	○	○
	L	○	×
13	H	○	×
	L	○	×

Specifications by Nozzle

Nozzle type	Rated pressure [MPa]	Maximum vacuum pressure [kPa]	Suction flow [L/min (ANR)]	Air consumption [L/min (ANR)]
05HS	0.5	-86	5	13.2
05LS		-60	9	
07HS		-86	11.5	22.6
07LS		-50	19.5	
07HR	0.35	-86	10	24.5
10HS	0.5	-90	25	47.5
10LS		-60	37	
10HR	0.35	-86	21	48.5
13HS	0.5	-92	35	79.5

Option

• Mounting Bracket

MCA — B



※With bracket

CONVUM Specifications

Description \ Model number	Unit	MCA-05		MCA-07			MCA-10			MCA-13	
		HS	LS	HS	LS	HR	HS	LS	HR	HS	
Nozzle size	mm	0.5		0.7			1.0			1.3	
Fluid		Non-lubricated compressed air									
Ambient temperature	°C	0 ~ 60 (No Freezing)									
Operating pressure range	MPa	0.1 ~ 0.6									
Rated pressure	MPa	0.5			0.35	0.5		0.35	0.5		
Maximum vacuum pressure	kPa	-86	-60	-86	-50	-86	-90	-60	-86	-92	
Suction flow	L/min(ANR)	5	9	11.5	19.5	10	25	37	21	35	
Air consumption	L/min(ANR)	13.2		22.6			24.5	47.5		48.5	79.5

Weight (g)

05/07 Nozzle Type

Port type	Weight
TTT	16.8
TTR	16.6
TRR	16.4
TRT	16.6
RRR	16.9
RRT	17.1
RTT	17.3
RTR	17.1

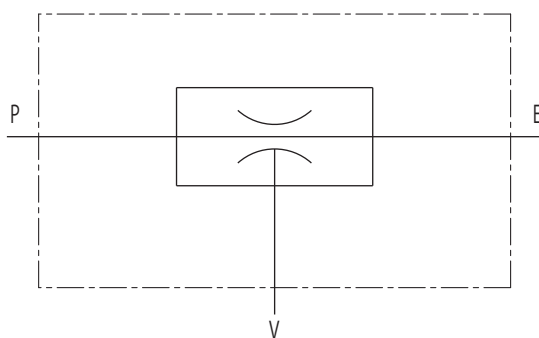
10/13 Nozzle Type

Port type	Weight
TTT	23.6
TTR	21.9
TRR	22.4
TRT	24.1
RRR	22.2
RRT	23.9
RTT	23.4
RTR	21.7

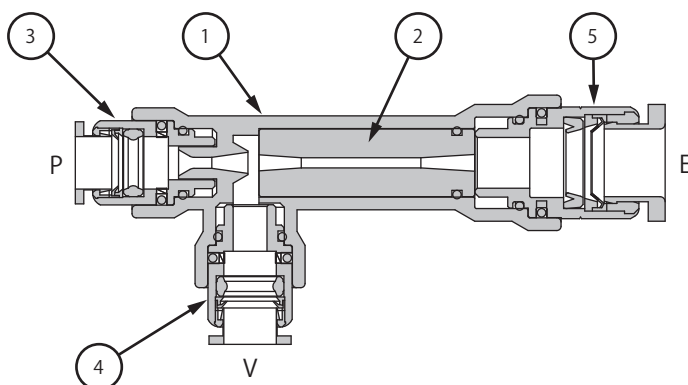
Mounting Bracket

Model number	Weight
MCA-B	1.1

Symbol



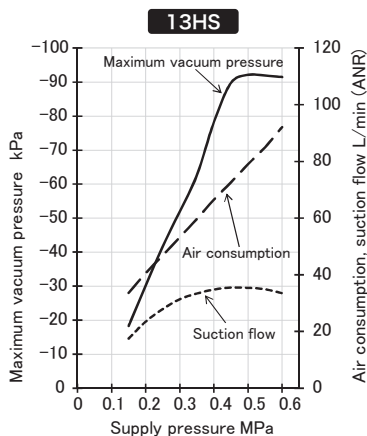
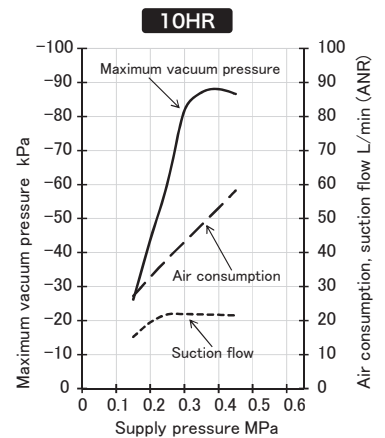
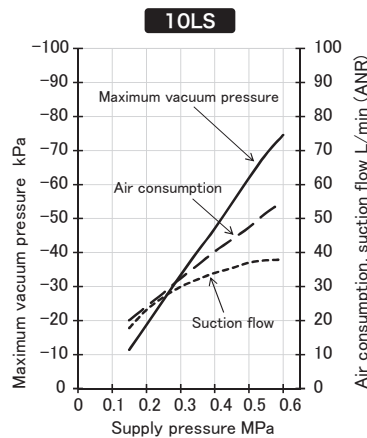
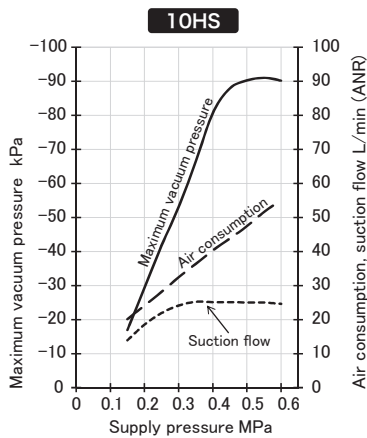
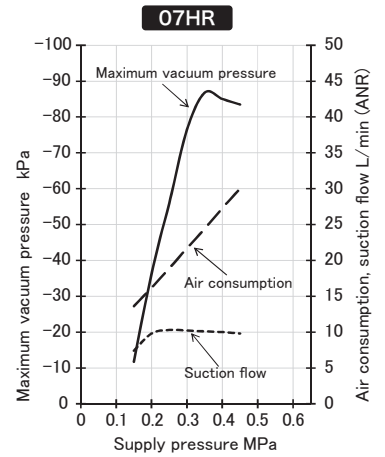
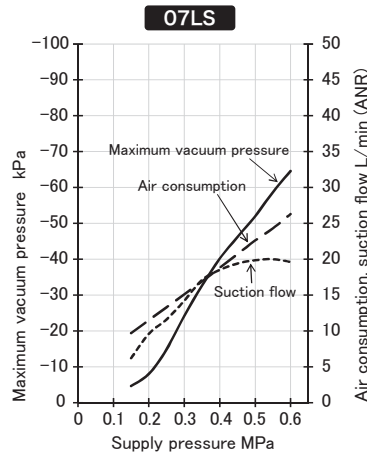
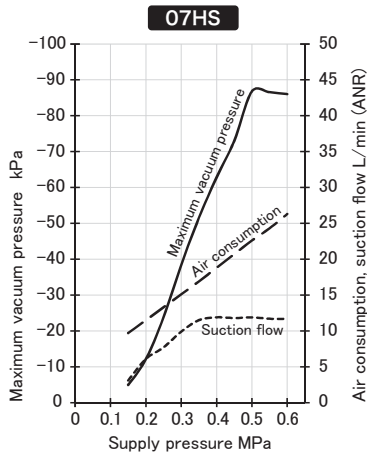
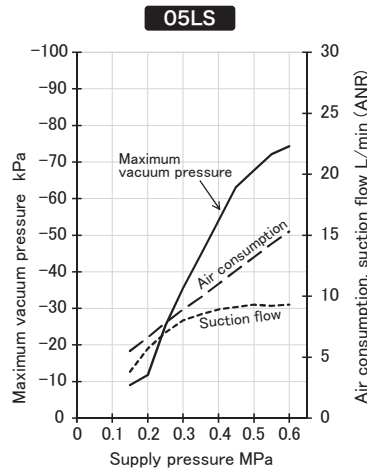
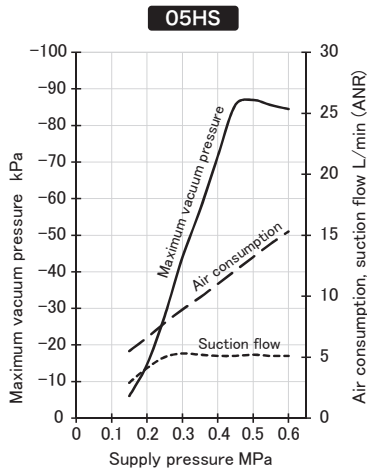
Construction



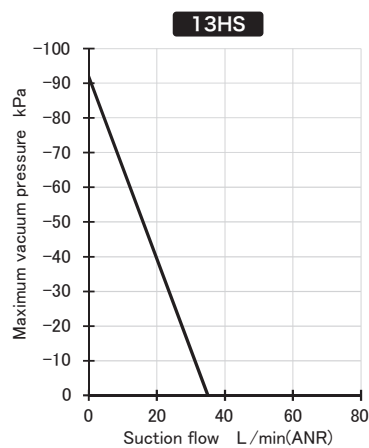
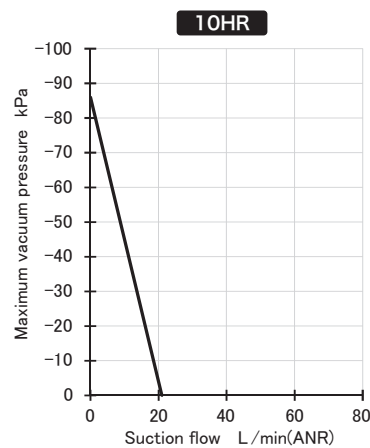
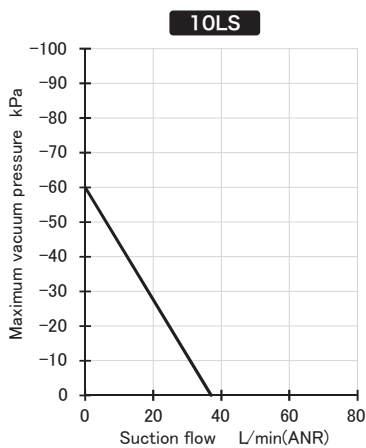
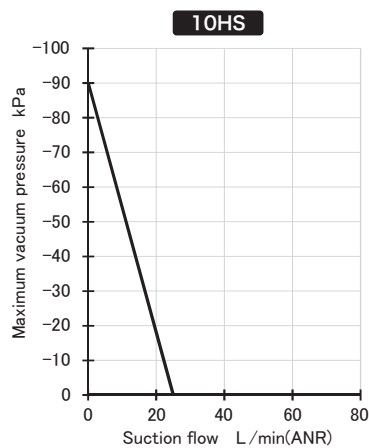
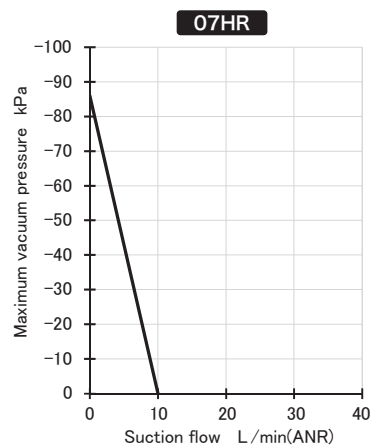
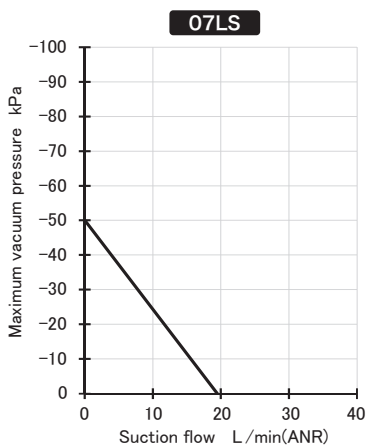
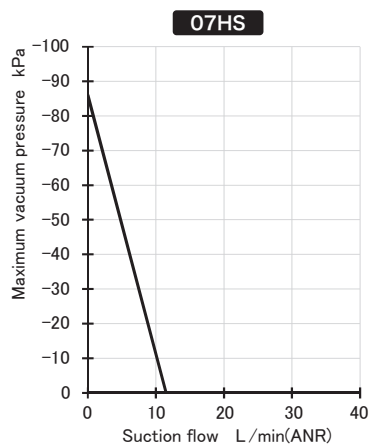
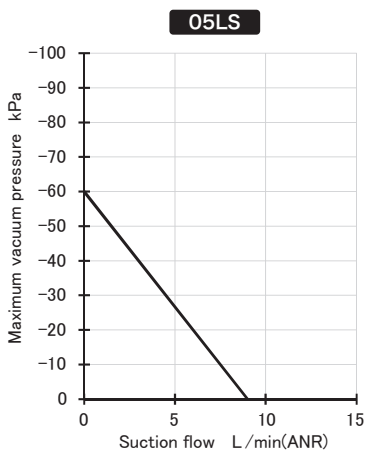
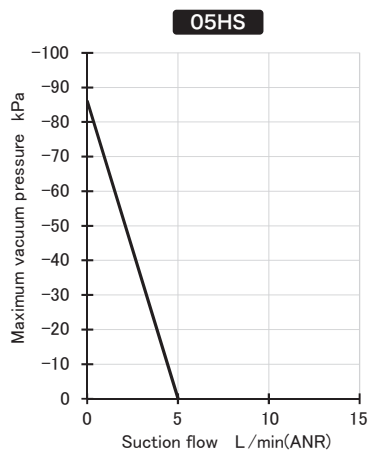
Component Parts

No.	Parts name	Material
1	Body	PA
2	Diffuser	Aluminum
3	Supply port Ass'y	-
4	Vacuum port Ass'y	-
5	Exhaust port Ass'y	-

Performance Charts



Suction Flow / Vacuum Pressure Characteristics



(mm)

MCA - B

