

# Cup with Thin Lip



The cup with thin lip. Suitable for smooth and pliable workpieces like paper or vinyl sheets!



Paper



Vinyl



Wafer

Wide range of cup sizes.

- φ5
- φ10
- φ15
- φ20
- φ25
- φ30
- φ40
- φ50

Various fittings for many kinds of applications.

Fixed fitting




Spring fitting










Compact type fitting



Suction Cup

 <p>PAG</p>	<p>Cup size (mm) φ 5 ~ 50</p>		<p>P.179</p>
--	-----------------------------------	--	--------------


Fitting

Type	Applicable cup size (mm)	Stroke (mm)	Vacuum port	Piping · Connector	Page
<p>Cup with fixed fitting PATK</p> 	<p>φ 10 ~ 50</p>	<p>N/A</p>	<p>Top</p>	<p>Barb</p>	<p>P.183</p>
<p>Cup with fixed fitting PAYK</p> 	<p>φ 10 ~ 50</p>	<p>N/A</p>	<p>Side</p>	<p>Barb</p>	<p>P.183</p>
<p>Cup with compact spring fitting PSS</p> 	<p>φ 10 ~ 20</p>	<p>3, 5</p>	<p>Top</p>	<p>Male screw</p>	<p>P.187</p>
<p>Cup with spring fitting NAPATS</p> 	<p>φ 10 ~ 20</p>	<p>3, 10, 15</p>	<p>Top</p>	<p>Female screw Push-in Barb</p>	<p>P.189</p>
	<p>φ 25 ~ 50</p>	<p>6, 15, 30</p>			
<p>Cup with spring fitting NAPAYS</p> 	<p>φ 10 ~ 20</p>	<p>3, 10, 15</p>	<p>Side</p>	<p>Female screw Push-in Barb</p>	<p>P.189</p>
	<p>φ 25 ~ 50</p>	<p>6, 15, 30</p>			
<p>Cup with non-rotation spring fitting NAPATH</p> 	<p>φ 10 ~ 20</p>	<p>3, 10, 15</p>	<p>Top</p>	<p>Female screw Push-in Barb</p>	<p>P.195</p>
	<p>φ 25 ~ 50</p>	<p>6, 15, 30</p>			
<p>Cup with non-rotation spring fitting NAPAYH</p> 	<p>φ 10 ~ 20</p>	<p>3, 10, 15</p>	<p>Side</p>	<p>Female screw Push-in Barb</p>	<p>P.195</p>
	<p>φ 25 ~ 50</p>	<p>6, 15, 30</p>			
<p>Setting screw</p> 	<p>φ 5 ~ 20, φ 30</p>	<p>—</p>	<p>—</p>	<p>—</p>	<p>P.503</p>

### How to Order

**PAG** — **10A** — **N**

①                      ②



**① Cup Size (mm)**

Symbol	Cup size	Symbol	Cup size
5B	φ5	20B	φ20
10A	φ10	25	φ25
10B	φ10	30	φ30
15A	φ15	30B	φ30
15B	φ15	40	φ40
20A	φ20	50	φ50

**② Cup Rubber Material**

Symbol	Material
N	NBR(Nitrile rubber)
S	Silicone rubber
F	Fluorine rubber
NE	Conductive NBR (Nitrile rubber)
SE	Conductive silicone rubber

※ Please consult with us for other material.

### Cup Rubber Material Standard Specifications

Symbol	Material	Hardness (A/s)	Ambient temperature (°C)	Color	Volume resistivity <sup>Note1,2</sup>
N	NBR (Nitrile rubber)	55	-26 ~ 120	Black	-
S	Silicone rubber	55	-60 ~ 250	Translucent white	-
F	Fluorine rubber	70	-10 ~ 230	Black with white dot	-
NE	Conductive NBR (Nitrile rubber)	70	-26 ~ 120	Black with blue dot	10 <sup>2</sup> ~ 10 <sup>3</sup> Ω · cm
SE	Conductive silicone rubber	55	-60 ~ 250	Black with red dot	10 <sup>2</sup> ~ 10 <sup>4</sup> Ω · cm

Note1) Volume resistivity shows conductivity, resistance value is per cm<sup>3</sup>.  
 Note2) It is the measured value of in our designated test piece.

### Applicable Rubber Material Table

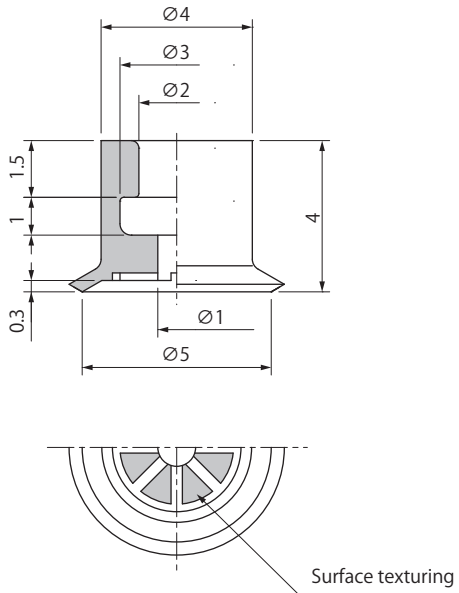
Material	Color	Symbol	Round type											
			5B	10A	10B	15A	15B	20A	20B	25	30	30B	40	50
NBR(Nitrile rubber)	Black	N	●	●	●	●	●	●	●	●	●	●	●	●
Silicone rubber	Translucent white	S	●	●	●	●	●	●	●	●	●	●	●	●
Fluorine rubber	Black with white dot	F	●	●	●	●	●	●	●	●	●	●	●	●
Conductive NBR (Nitrile rubber)	Black with blue dot	NE	●	●	●	●	●	●	●	○	○	○	○	○
Conductive silicone rubber	Black with red dot	SE	●	●	●	●	●	●	○	○	○	○	○	○

● : In stock    ○ : Made to order    × : None  
 ※ Please consult with us for other material.

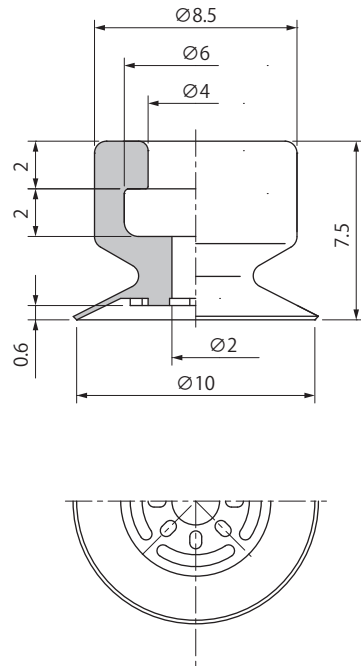
Dimensions

(mm)

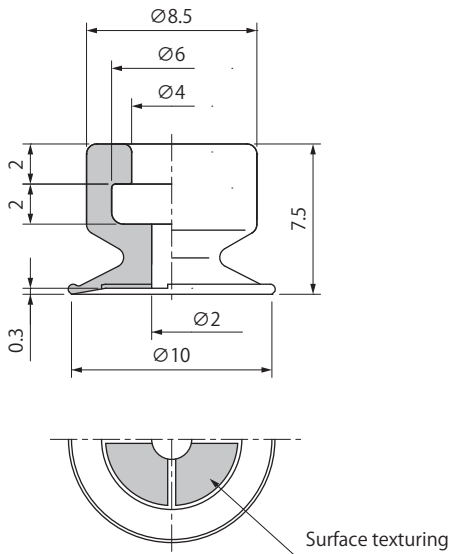
PAG-5B



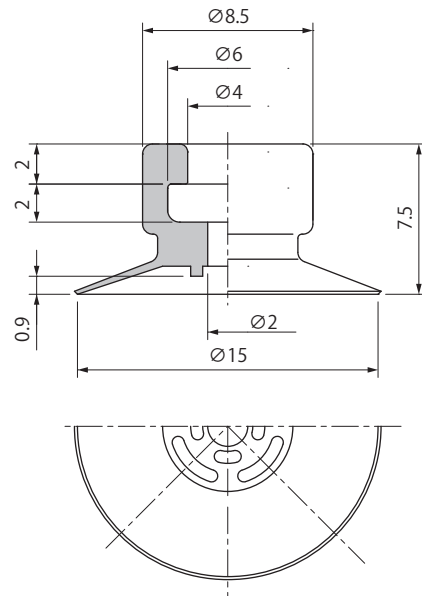
PAG-10A



PAG-10B



PAG-15A



Weight

(g)

Model \ Material	N	S	F	NE	SE	Applicable setting screw (Screws specifications)
PAG-5B	0.1	0.1	0.1	0.1	0.1	TN-PS-2A-M3 (Male M3X0.5) TN-PS-2A-M3F (Female M3X0.5) TN-PS-2A-M5 (Male M5X0.8)
PAG-10A	0.3	0.3	0.5	0.3	0.3	TN-PS-10-M5 (Male M5X0.8) TN-PS-10-M5F (Female M5X0.8)
PAG-10B	0.3	0.3	0.5	0.4	0.3	
PAG-15A	0.4	0.4	0.6	0.4	0.4	

Symbol	Material
N	NBR(Nitrile rubber)
S	Silicone rubber
F	Fluorine rubber
NE	Conductive NBR (Nitrile rubber)
SE	Conductive silicone rubber

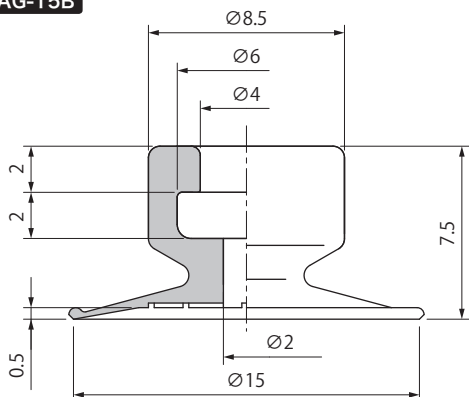
※Please refer to P.503 for setting screw detailed specifications.

## PAG Cup with Thin Lip

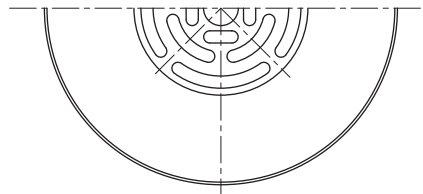
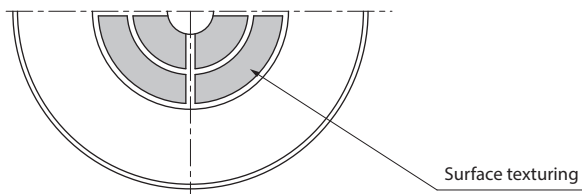
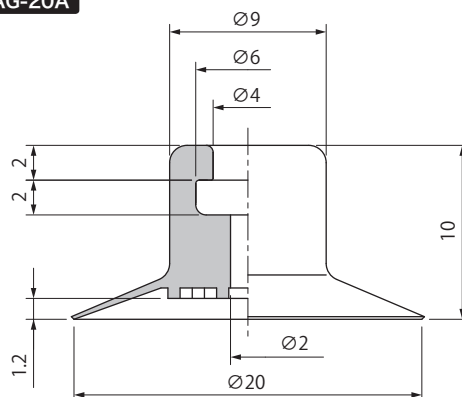
### Dimensions

(mm)

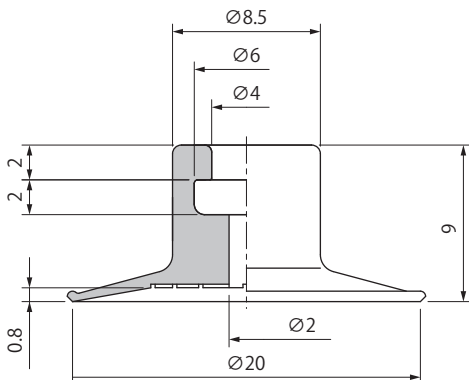
**PAG-15B**



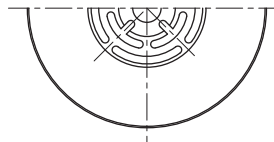
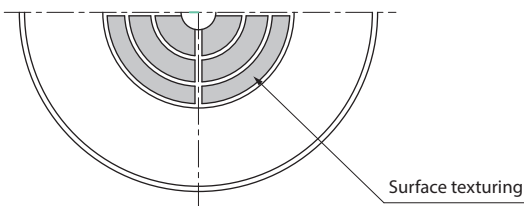
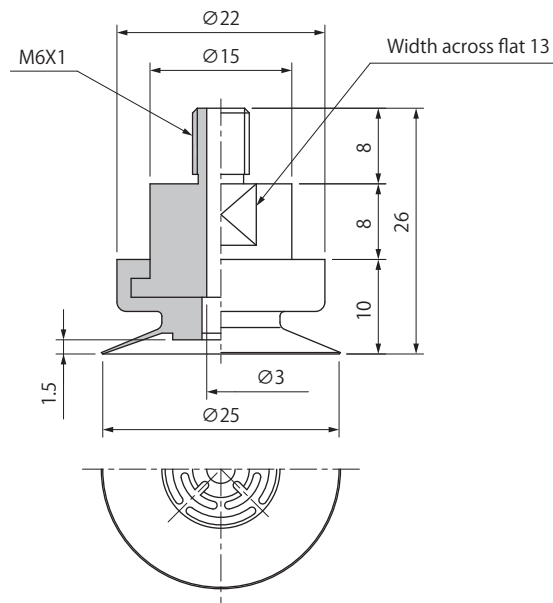
**PAG-20A**



**PAG-20B**



**PAG-25**



### Weight

(g)

Model \ Material	N	S	F	NE	SE	Applicable setting screw (Screws specifications)
PAG-15B	0.4	0.4	0.6	0.4	0.4	TN-PS-10-M5 (Male M5X0.8) TN-PS-10-M5F (Female M5X0.8)
PAG-20A	0.6	0.6	1.0	0.7	0.6	
PAG-20B	0.7	0.7	1.1	0.7	0.7	
PAG-25	19.6	19.6	20.8	19.7	19.6	-

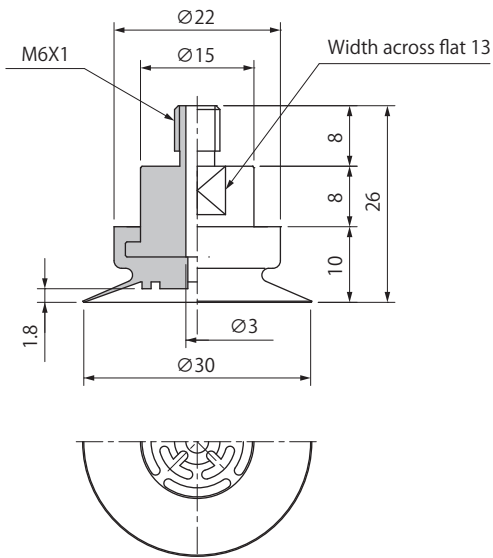
※Please refer to P.503 for setting screw detailed specifications.

Symbol	Material
N	NBR(Nitrile rubber)
S	Silicone rubber
F	Fluorine rubber
NE	Conductive NBR (Nitrile rubber)
SE	Conductive silicone rubber

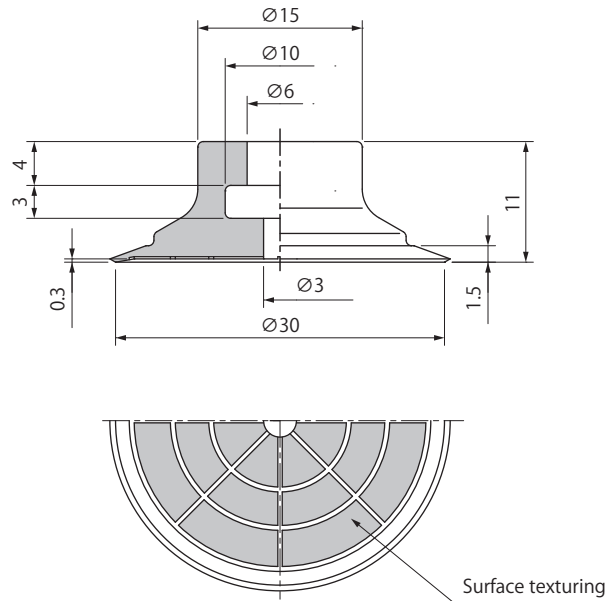
Dimensions

(mm)

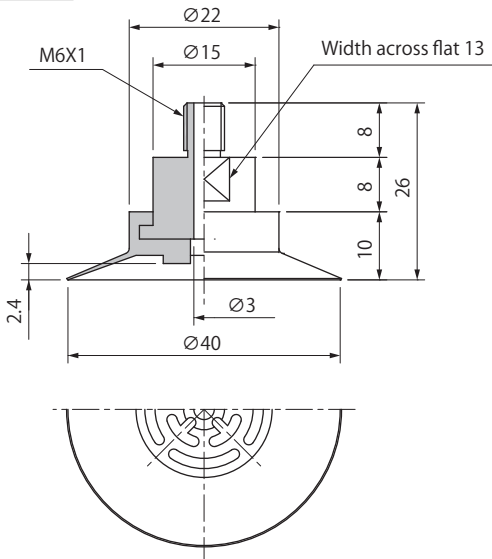
PAG-30



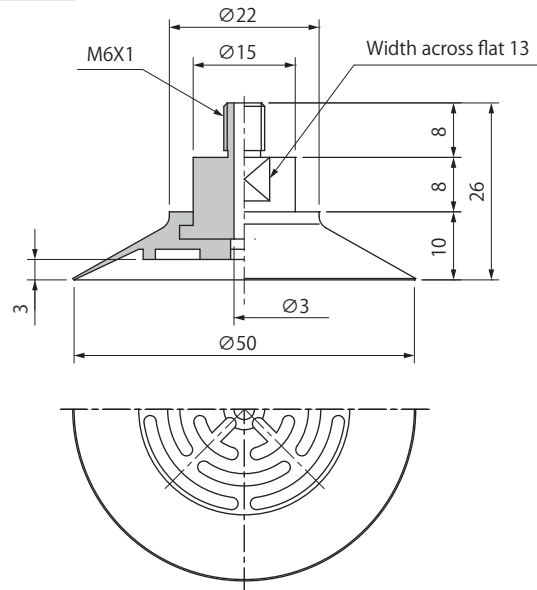
PAG-30B



PAG-40



PAG-50



Weight

(g)

Model \ Material	N	S	F	NE	SE	Applicable setting screw (Screws specifications)
PAG-30	19.9	19.9	21.3	20.1	19.9	-
PAG-30B	3.1	3.1	5.0	3.3	3.1	TN-PA-30-M6 (Male M6X1.0)
PAG-40	20.0	20.0	21.4	20.2	20.0	-
PAG-50	22.0	22.0	24.6	22.3	22.0	-

Symbol	Material
N	NBR(Nitrile rubber)
S	Silicone rubber
F	Fluorine rubber
NE	Conductive NBR (Nitrile rubber)
SE	Conductive silicone rubber

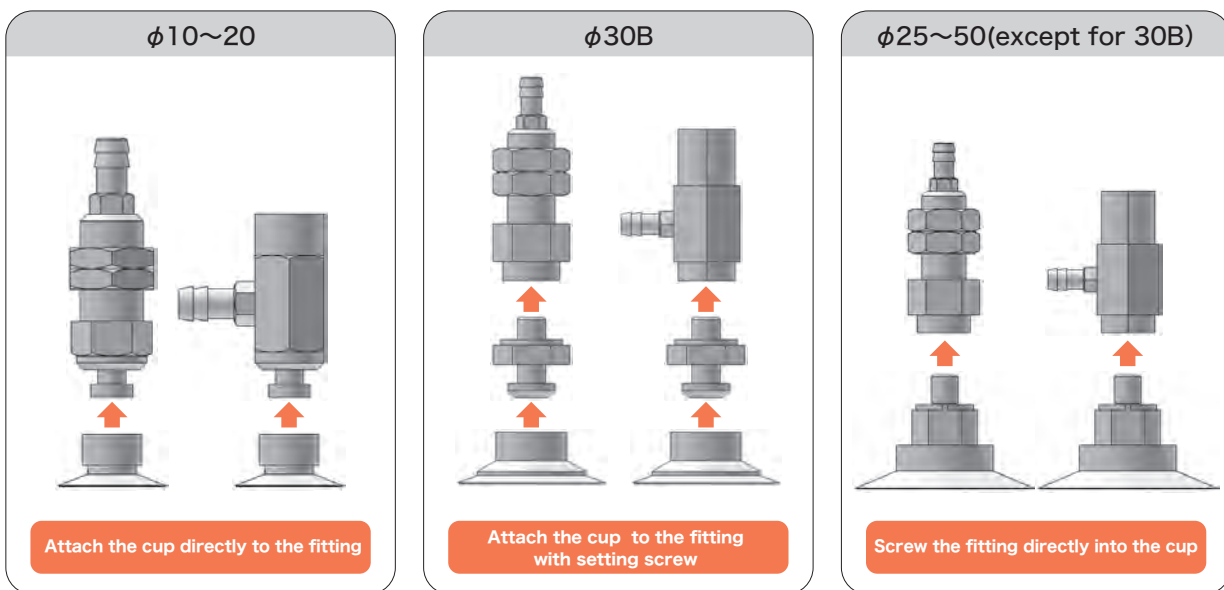
※Please refer to P.503 for setting screw detailed specifications.

## PATK·YK Cup with Fixed Fitting

Suction Cup  
Cup with Thin Lip



Consisting of fitting, setting screw, suction cup.



### How to Order

PA **T** K - **10A** - **N**

① Vacuum Port

T	Top
Y	Side

② Cup Size (mm)

Symbol	Cup size	Symbol	Cup size
10A	φ 10	25	φ 25
10B	φ 10	30	φ 30
15A	φ 15	30B	φ 30
15B	φ 15	40	φ 40
20A	φ 20	50	φ 50
20B	φ 20		

③ Cup Rubber Material

Symbol	Material
N	NBR(Nitrile rubber)
S	Silicone rubber
F	Fluorine rubber
NE	Conductive NBR(Nitrile rubber)
SE	Conductive silicone rubber

※ Please consult with us for other material.

02 Suction Cup

PA

PB

PC

PCD

PD

PF

PFO

PH

PJ

CORE

PK2

PK2B

PK2L

PL

PN

PN-B

PP

PQ

PR

PU

PW

RA

SM

TN

## Combination Table

## Top Port

Model number	Cup	Setting screw	Fitting	Piping specifications	
PATK-10A- <input type="checkbox"/>	PAG-10A- <input type="checkbox"/>	Attach the cup directly to the fitting	PFTK-10A-K	Barb	φ 6X4
PATK-10B- <input type="checkbox"/>	PAG-10B- <input type="checkbox"/>				
PATK-15A- <input type="checkbox"/>	PAG-15A- <input type="checkbox"/>				
PATK-15B- <input type="checkbox"/>	PAG-15B- <input type="checkbox"/>				
PATK-20A- <input type="checkbox"/>	PAG-20A- <input type="checkbox"/>				
PATK-20B- <input type="checkbox"/>	PAG-20B- <input type="checkbox"/>				
PATK-25- <input type="checkbox"/>	PAG-25- <input type="checkbox"/>	Screw the fitting directly into the male screw in the cup	PATK-25-K	Barb	φ 6X4
PATK-30- <input type="checkbox"/>	PAG-30- <input type="checkbox"/>	TN-PA-30-M6			
PATK-30B- <input type="checkbox"/>	PAG-30B- <input type="checkbox"/>				
PATK-40- <input type="checkbox"/>	PAG-40- <input type="checkbox"/>	Screw the fitting directly into the male screw in the cup			
PATK-50- <input type="checkbox"/>	PAG-50- <input type="checkbox"/>				

※ in the table indicates the cup material.

## Side Port

Model number	Cup	Setting screw	Fitting	Piping specifications	
PAYK-10A- <input type="checkbox"/>	PAG-10A- <input type="checkbox"/>	Attach the cup directly to the fitting	PFYK-5A-K	Barb	φ 6X4
PAYK-10B- <input type="checkbox"/>	PAG-10B- <input type="checkbox"/>				
PAYK-15A- <input type="checkbox"/>	PAG-15A- <input type="checkbox"/>				
PAYK-15B- <input type="checkbox"/>	PAG-15B- <input type="checkbox"/>				
PAYK-20A- <input type="checkbox"/>	PAG-20A- <input type="checkbox"/>				
PAYK-20B- <input type="checkbox"/>	PAG-20B- <input type="checkbox"/>				
PAYK-25- <input type="checkbox"/>	PAG-25- <input type="checkbox"/>	Screw the fitting directly into the male screw in the cup	PAYK-25-K	Barb	φ 6X4
PAYK-30- <input type="checkbox"/>	PAG-30- <input type="checkbox"/>	TN-PA-30-M6			
PAYK-30B- <input type="checkbox"/>	PAG-30B- <input type="checkbox"/>				
PAYK-40- <input type="checkbox"/>	PAG-40- <input type="checkbox"/>	Screw the fitting directly into the male screw in the cup			
PAYK-50- <input type="checkbox"/>	PAG-50- <input type="checkbox"/>				

※ in the table indicates the cup material.



# PATK·YK Cup with Fixed Fitting

Suction Cup Cup with Thin Lip

02 Suction Cup

PA

PB

PC

PCD

PD

PF

PFO

PH

PJ

CORE

PK2

PK2B

PK2L

PL

PN

PN-B

PP

PQ

PR

PU

PW

RA

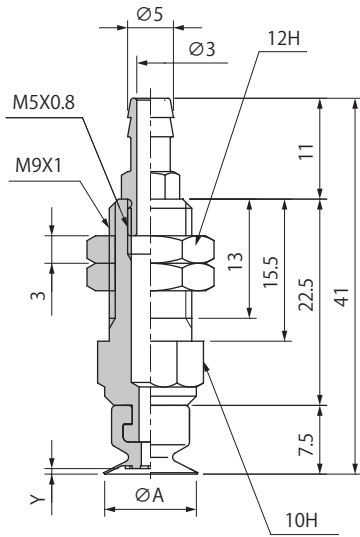
SM

TN

## Dimensions

(mm)

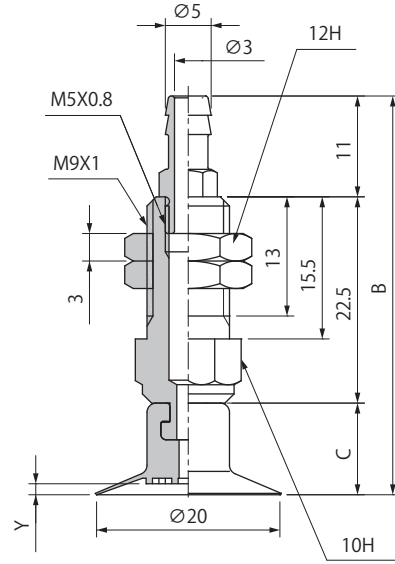
Top Port PATK-10A/10B/15A/15B



Model number	A	Y	Weight (g)
PATK-10A-□	10	0.6	15
PATK-10B-□		0.3	
PATK-15A-□	15	0.9	
PATK-15B-□		0.5	

※□ in the table indicates the cup material.  
 ※ The weight value is when NBR (Nitrile rubber) is selected.

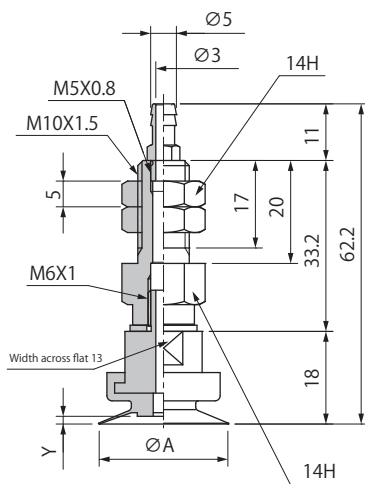
Top Port PATK-20A/20B



Model number	B	C	Y	Weight (g)
PATK-20A-□	43.5	10	1.2	16
PATK-20B-□	42.5	9	0.8	

※□ in the table indicates the cup material.  
 ※ The weight value is when NBR (Nitrile rubber) is selected.

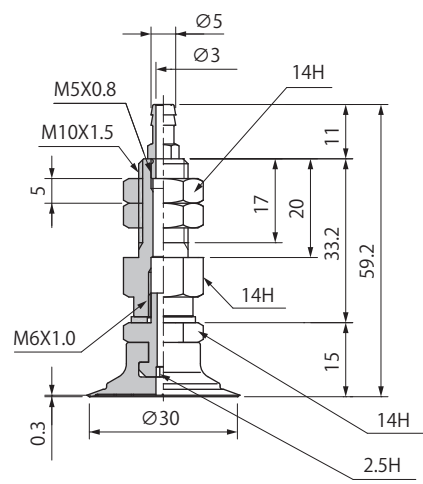
Top Port PATK-25/30/40/50



Model number	A	Y	Weight (g)
PATK-25-□	25	1.5	54
PATK-30-□	30	1.8	55
PATK-40-□	40	2.4	
PATK-50-□	50	3	56

※□ in the table indicates the cup material.  
 ※ The weight value is when NBR (Nitrile rubber) is selected.

Top Port PATK-30B



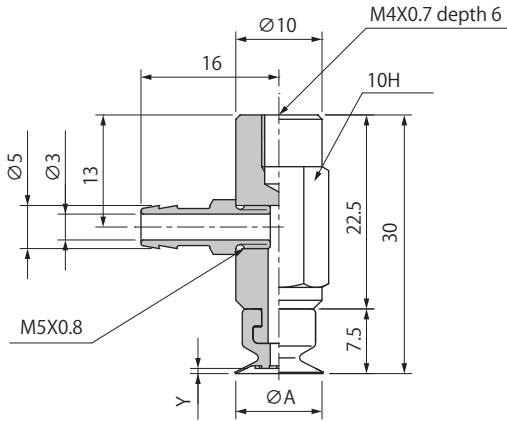
Model number	Weight (g)
PATK-30B-□	63

※□ in the table indicates the cup material.  
 ※ The weight value is when NBR (Nitrile rubber) is selected.

Dimensions

(mm)

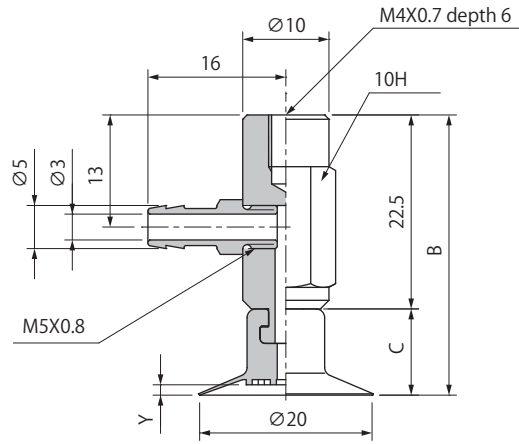
Side Port PAYK-10A/10B/15A/15B



Model number	A	Y	Weight (g)
PAYK-10A-□	10	0.6	16
PAYK-10B-□		0.3	
PAYK-15A-□	15	0.9	
PAYK-15B-□		0.5	

※□ in the table indicates the cup material.  
※ The weight value is when NBR (Nitrile rubber) selected.

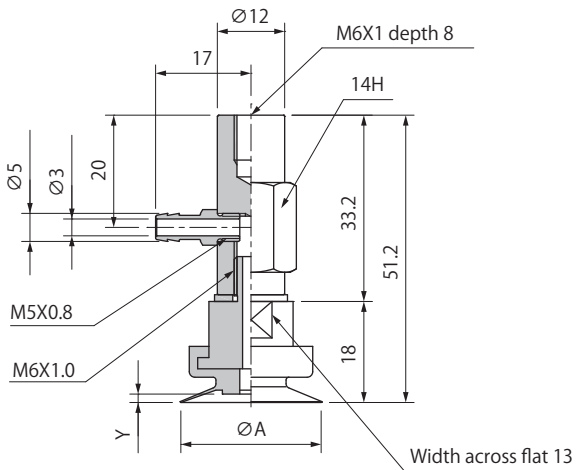
Side Port PAYK-20A/20B



Model number	B	C	Y	Weight (g)
PAYK-20A-□	32.5	10	1.2	17
PAYK-20B-□	31.5	9	0.8	

※□ in the table indicates the cup material.  
※ The weight value is when NBR (Nitrile rubber) selected.

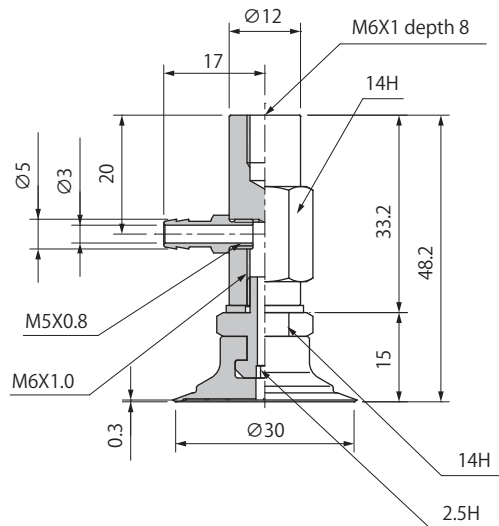
Side Port PAYK-25/30/40/50



Model number	A	Y	Weight (g)
PAYK-25-□	25	1.5	54
PAYK-30-□	30	1.8	55
PAYK-40-□	40	2.4	
PAYK-50-□	50	3	56

※□ in the table indicates the cup material.  
※ The weight value is when NBR (Nitrile rubber) selected.

Side Port PAYK-30B



Model number	Weight (g)
PAYK-30B-□	63

※□ in the table indicates the cup material.  
※ The weight value is when NBR (Nitrile rubber) selected.

02

Suction Cup

PA

PB

PC

PCD

PD

PF

PFO

PH

PJ

CORE

PK2

PK2B

PK2L

PL

PN

PN-B

PP

PQ

PR

PU

PW

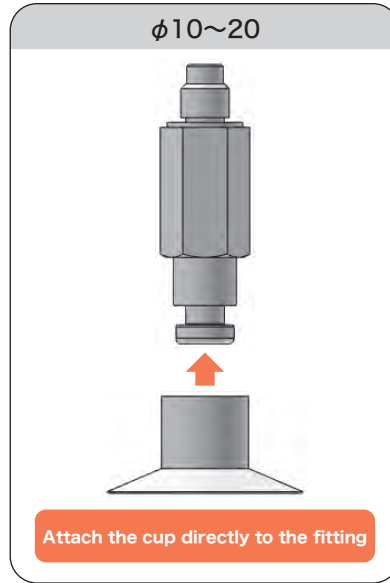
RA

SM

TN

## PSS Cup with Compact Spring Fitting

Suction Cup  
Cup with Thin Lip



Simple construction of the cup and the fitting.

### How to Order

PSS — L3 — PAG — 10A — N

①  
① Stroke (mm)

Symbol	Length
L3	3
L5	5

②  
② Cup Size (mm)

Symbol	Cup size
10A	$\phi 10$
15A	$\phi 15$
20A	$\phi 20$

③  
③ Cup Rubber Material

Symbol	Material
N	NBR (Nitrile rubber)
S	Silicone rubber
F	Fluorine rubber
NE	Conductive NBR (Nitrile rubber)
SE	Conductive silicone rubber

※ Please consult with us for other material.

### Combination Table

Model number	Cup	Fitting	Piping specifications
PSS-L3-PAG-10A-□	PAG-10A-□	PSS-L3	M5X0.8 (Male)
PSS-L3-PAG-15A-□	PAG-15A-□		
PSS-L3-PAG-20A-□	PAG-20A-□		
PSS-L5-PAG-10A-□	PAG-10A-□	PSS-L5	
PSS-L5-PAG-15A-□	PAG-15A-□		
PSS-L5-PAG-20A-□	PAG-20A-□		

※□ in the table indicates the cup material.

### Spring Specifications

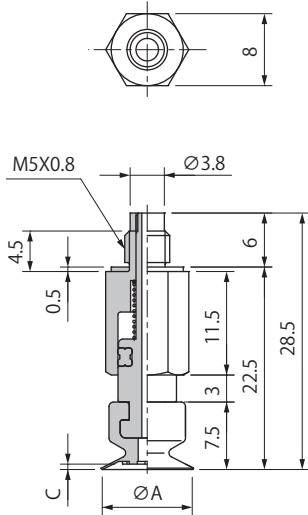
Cup Size	Unit	$\phi 10\sim\phi 20$	
Stroke	mm	3	5
Spring load at 0 stroke	N	1.5	1.62
Spring load at full stroke	N	2.3	3.2
Tightening torque	N · m	0.58~0.68	

※ Due to structural reason, 「lift-up」 may occur in case vacuum pressure is more than -65kPa. The weight of non 「lift-up」 in horizontal lifting is about over 200g. Screw must be tightened in recommended tightening torque, otherwise malfunction would occur.

Dimensions

(mm)

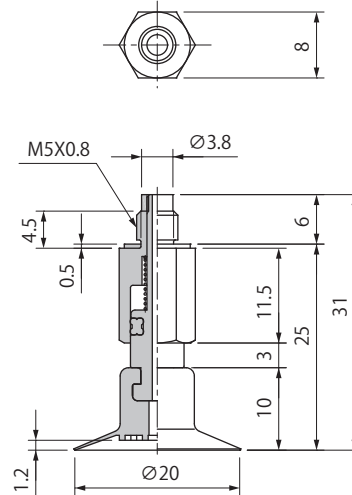
PSS-L3-PAG-10A/15A



Model number	A	C	Weight (g)
PSS-L3-PAG-10A-□	10	0.6	10
PSS-L3-PAG-15A-□	15	0.9	

※□ in the table indicates the cup material.  
※ The weight value is when NBR (Nitrile rubber) selected.

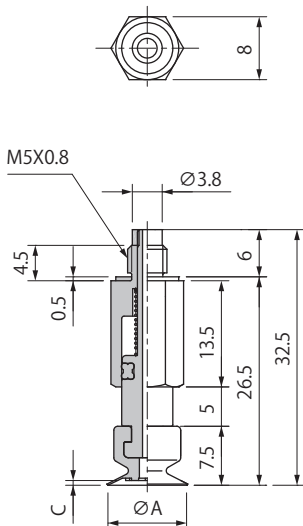
PSS-L3-PAG-20A



Model number	Weight (g)
PSS-L3-PAG-20A-□	13

※□ in the table indicates the cup material.  
※ The weight value is when NBR (Nitrile rubber) selected.

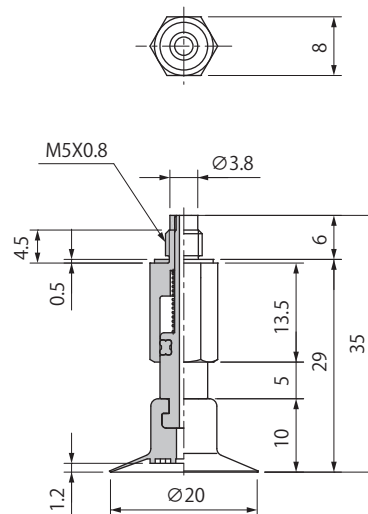
PSS-L5-PAG-10A/15A



Model number	A	C	Weight (g)
PSS-L5-PAG-10A-□	10	0.6	11
PSS-L5-PAG-15A-□	15	0.9	

※□ in the table indicates the cup material.  
※ The weight value is when NBR (Nitrile rubber) selected.

PSS-L5-PAG-20A



Model number	Weight (g)
PSS-L3-PAG-20A-□	14

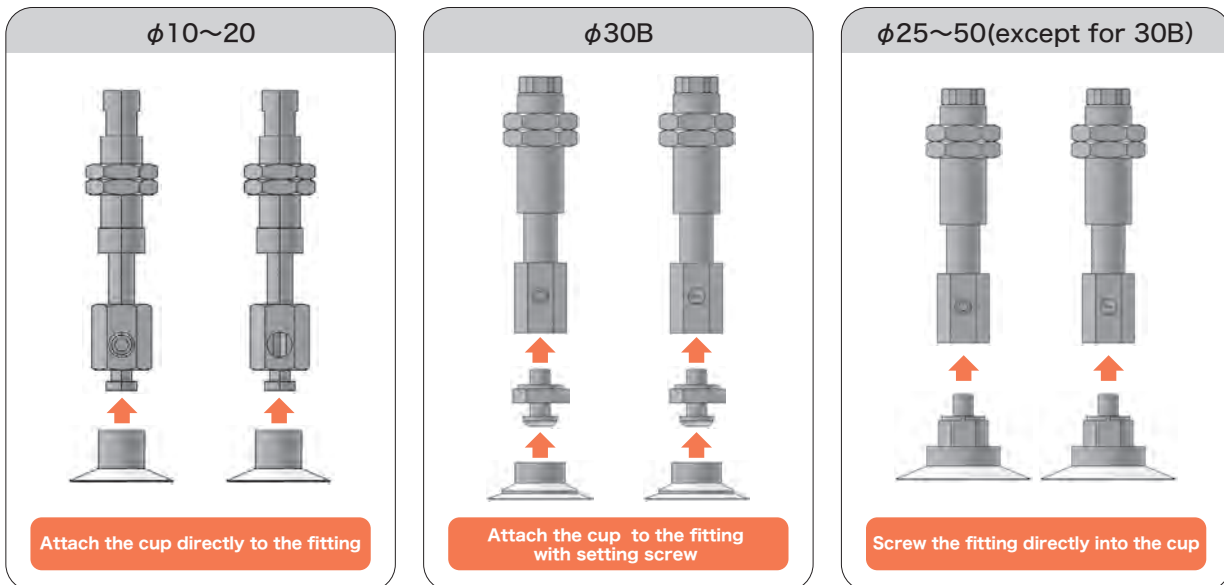
※□ in the table indicates the cup material.  
※ The weight value is when NBR (Nitrile rubber) selected.

## NAPATS-YS Cup with Spring Fitting

Suction Cup  
Cup with Thin Lip



Consisting of fitting, setting screw, suction cup.



### How to Order

**NAPA** **T** **S** - **10A-3** - **N** - **T**

① Vacuum Port

T	Top
Y	Side

② Cup Size - Stroke (mm)

Symbol	Cup size Stroke	Symbol	Cup size Stroke	Symbol	Cup size Stroke
10A-3	φ 10-3	20A-3	φ 20-3	30B-6	φ 30-6
10A-10	φ 10-10	20A-10	φ 20-10	30B-15	φ 30-15
10A-15	φ 10-15	20A-15	φ 20-15	30B-30	φ 30-30
10B-3	φ 10-3	20B-3	φ 20-3	40-6	φ 40-6
10B-10	φ 10-10	20B-10	φ 20-10	40-15	φ 40-15
10B-15	φ 10-15	20B-15	φ 20-15	40-30	φ 40-30
15A-3	φ 15-3	25-6	φ 25-6	50-6	φ 50-6
15A-10	φ 15-10	25-15	φ 25-15	50-15	φ 50-15
15A-15	φ 15-15	25-30	φ 25-30	50-30	φ 50-30
15B-3	φ 15-3	30-6	φ 30-6		
15B-10	φ 15-10	30-15	φ 30-15		
15B-15	φ 15-15	30-30	φ 30-30		

③ Cup Rubber Material

Symbol	Material
N	NBR (Nitrile rubber)
S	Silicone rubber
F	Fluorine rubber
NE	Conductive NBR (Nitrile rubber)
SE	Conductive silicone rubber

④ Connector

Blank	N/A
T	Barb
O	Push-in

※ Please consult with us for other material.

### Spring Specifications

Cup Size	Unit	φ10~20			φ25~50		
Stroke	mm	3	10	15	6	15	30
Spring load at 0 stroke	N	0.61		0.64	2.45		2.9
Spring load at full stroke	N	0.77	1.17		3.43	4.9	5.88

### Combination Table

Model number	Cup	Setting screw	Fitting	Piping specifications		
				Without connector · Blank	Barb connector · T	Push-in connector · O
NAPA○S-10A-3-□ (-T/O)	PAG-10A-□	Attach the cup directly to the fitting	NAPF○S-10A-3-K (-T/O)	M5X0.8 (Female)	φ 6 X 4	
NAPA○S-10A-10-□ (-T/O)			NAPF○S-10A-10-K (-T/O)			
NAPA○S-10A-15-□ (-T/O)			NAPF○S-10A-15-K (-T/O)			
NAPA○S-10B-3-□ (-T/O)	PAG-10B-□		NAPF○S-10A-3-K (-T/O)			
NAPA○S-10B-10-□ (-T/O)			NAPF○S-10A-10-K (-T/O)			
NAPA○S-10B-15-□ (-T/O)			NAPF○S-10A-15-K (-T/O)			
NAPA○S-15A-3-□ (-T/O)	PAG-15A-□		NAPF○S-10A-3-K (-T/O)			
NAPA○S-15A-10-□ (-T/O)			NAPF○S-10A-10-K (-T/O)			
NAPA○S-15A-15-□ (-T/O)			NAPF○S-10A-15-K (-T/O)			
NAPA○S-15B-3-□ (-T/O)	PAG-15B-□		NAPF○S-10A-3-K (-T/O)			
NAPA○S-15B-10-□ (-T/O)			NAPF○S-10A-10-K (-T/O)			
NAPA○S-15B-15-□ (-T/O)			NAPF○S-10A-15-K (-T/O)			
NAPA○S-20A-3-□ (-T/O)	PAG-20A-□		NAPF○S-10A-3-K (-T/O)			
NAPA○S-20A-10-□ (-T/O)			NAPF○S-10A-10-K (-T/O)			
NAPA○S-20A-15-□ (-T/O)			NAPF○S-10A-15-K (-T/O)			
NAPA○S-20B-3-□ (-T/O)	PAG-20B-□	NAPF○S-10A-3-K (-T/O)				
NAPA○S-20B-10-□ (-T/O)		NAPF○S-10A-10-K (-T/O)				
NAPA○S-20B-15-□ (-T/O)		NAPF○S-10A-15-K (-T/O)				
NAPA○S-25-6-□ (-T/O)	PAG-25-□	Screw the fitting directly into the male screw in the cup	NAPA○S-25-6-K (-T/O)			
NAPA○S-25-15-□ (-T/O)			NAPA○S-25-15-K (-T/O)			
NAPA○S-25-30-□ (-T/O)			NAPA○S-25-30-K (-T/O)			
NAPA○S-30-6-□ (-T/O)	PAG-30-□		NAPA○S-25-6-K (-T/O)			
NAPA○S-30-15-□ (-T/O)			NAPA○S-25-15-K (-T/O)			
NAPA○S-30-30-□ (-T/O)			NAPA○S-25-30-K (-T/O)			
NAPA○S-30B-6-□ (-T/O)	PAG-30B-□	TN-PA-30-M6	NAPA○S-25-6-K (-T/O)			
NAPA○S-30B-15-□ (-T/O)		NAPA○S-25-15-K (-T/O)				
NAPA○S-30B-30-□ (-T/O)		NAPA○S-25-30-K (-T/O)				
NAPA○S-40-6-□ (-T/O)	PAG-40-□	Screw the fitting directly into the male screw in the cup	NAPA○S-25-6-K (-T/O)			
NAPA○S-40-15-□ (-T/O)			NAPA○S-25-15-K (-T/O)			
NAPA○S-40-30-□ (-T/O)			NAPA○S-25-30-K (-T/O)			
NAPA○S-50-6-□ (-T/O)	PAG-50-□		NAPA○S-25-6-K (-T/O)			
NAPA○S-50-15-□ (-T/O)			NAPA○S-25-15-K (-T/O)			
NAPA○S-50-30-□ (-T/O)			NAPA○S-25-30-K (-T/O)			

※□ in the table indicates the cup material.  
 ※○ in the table indicates the vacuum port (T or Y).

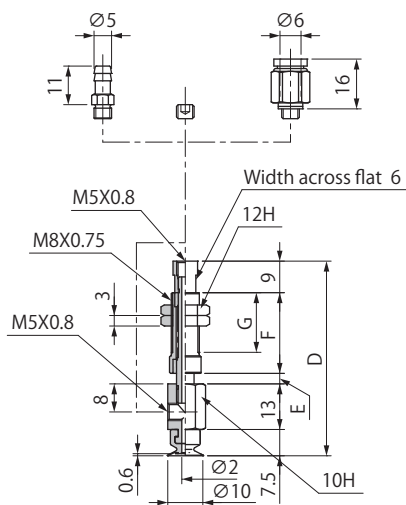
- PB
- PC
- PCD
- PD
- PF
- PFO
- PH
- PJ
- CORE
- PK2
- PK2B
- PK2L
- PL
- PN
- PN-B
- PP
- PQ
- PR
- PU
- PW
- RA
- SM
- TN

## NAPATS·YS Cup with Spring Fitting

### Dimensions

(mm)

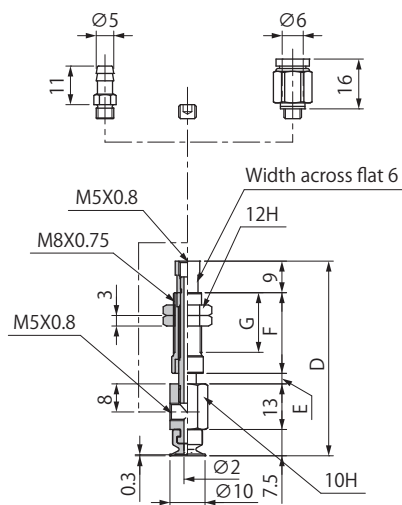
#### NAPAT/YS-10A



Model number	D	E	F	G	Weight(g)
NAPAT/YS-10A-3-□(-T/O)	55.5	3	23	17	18
NAPAT/YS-10A-10-□(-T/O)	62.5	10			18.5
NAPAT/YS-10A-15-□(-T/O)	75	15	30.5	24.5	21

※□ in the table indicates the cup material.  
※ The weight value is when NBR (Nitrile rubber) / without connector selected.

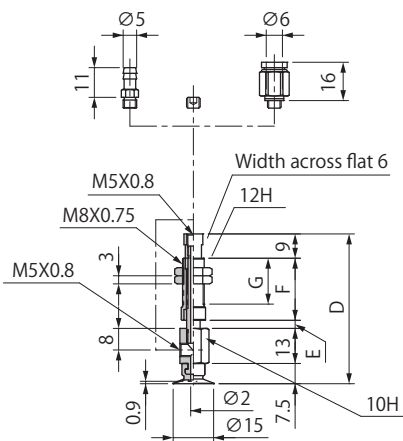
#### NAPAT/YS-10B



Model number	D	E	F	G	Weight(g)
NAPAT/YS-10B-3-□(-T/O)	55.5	3	23	17	18
NAPAT/YS-10B-10-□(-T/O)	62.5	10			18.5
NAPAT/YS-10B-15-□(-T/O)	75	15	30.5	24.5	21

※□ in the table indicates the cup material.  
※ The weight value is when NBR (Nitrile rubber) / without connector selected.

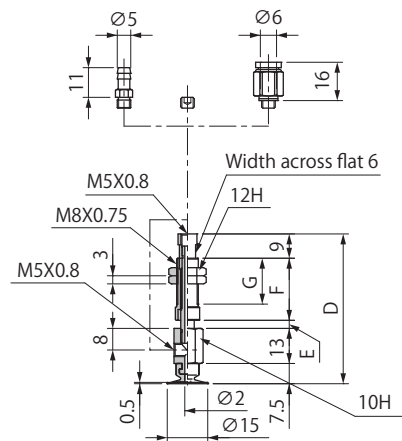
#### NAPAT/YS-15A



Model number	D	E	F	G	Weight(g)
NAPAT/YS-15A-3-□(-T/O)	55.5	3	23	17	18
NAPAT/YS-15A-10-□(-T/O)	62.5	10			18.5
NAPAT/YS-15A-15-□(-T/O)	75	15	30.5	24.5	21

※□ in the table indicates the cup material.  
※ The weight value is when NBR (Nitrile rubber) / without connector selected.

#### NAPAT/YS-15B



Model number	D	E	F	G	Weight(g)
NAPAT/YS-15B-3-□(-T/O)	55.5	3	23	17	18
NAPAT/YS-15B-10-□(-T/O)	62.5	10			18.5
NAPAT/YS-15B-15-□(-T/O)	75	15	30.5	24.5	21

※□ in the table indicates the cup material.  
※ The weight value is when NBR (Nitrile rubber) / without connector selected.

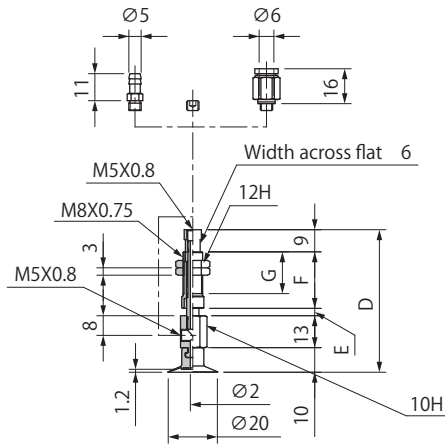
### Common Specifications

Connector Weight(g)	
Symbol	Tube O.D φ 6
T	1.5
O	4.0

Dimensions

(mm)

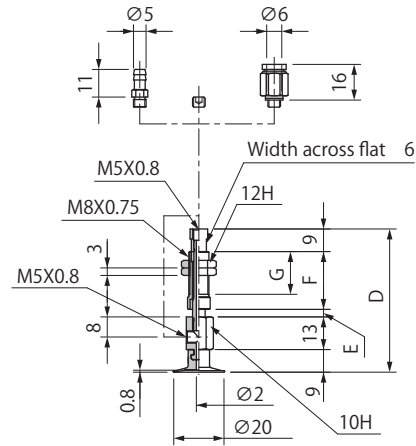
NAPAT/YS-20A



Model number	D	E	F	G	Weight (g)
NAPAT/YS-20A-3-□(-T/O)	58	3	23	17	18
NAPAT/YS-20A-10-□(-T/O)	65	10			18.5
NAPAT/YS-20A-15-□(-T/O)	77.5	15	30.5	24.5	21

※□ in the table indicates the cup material.  
※ The weight value is when NBR (Nitrile rubber) / without connector selected.

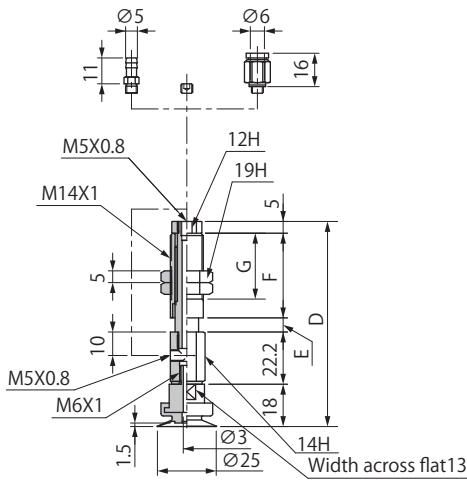
NAPAT/YS-20B



Model number	D	E	F	G	Weight (g)
NAPAT/YS-20B-3-□(-T/O)	57	3	23	17	18
NAPAT/YS-20B-10-□(-T/O)	64	10			18.5
NAPAT/YS-20B-15-□(-T/O)	76.5	15	30.5	24.5	21

※□ in the table indicates the cup material.  
※ The weight value is when NBR (Nitrile rubber) / without connector selected.

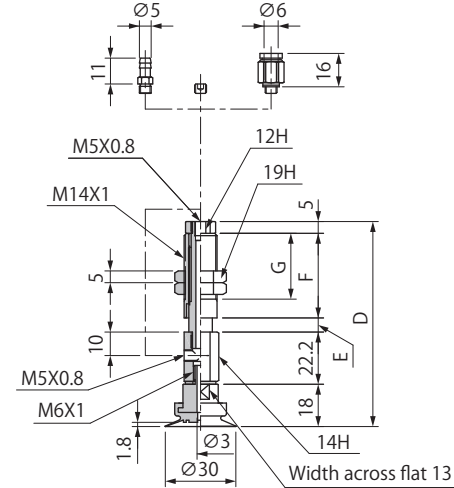
NAPAT/YS-25



Model number	D	E	F	G	Weight (g)
NAPAT/YS-25-6-□(-T/O)	87.2	6	36	28	81
NAPAT/YS-25-15-□(-T/O)	96.2	15			86
NAPAT/YS-25-30-□(-T/O)	133.2	30	58	50	111

※□ in the table indicates the cup material.  
※ The weight value is when NBR (Nitrile rubber) / without connector selected.

NAPAT/YS-30



Model number	D	E	F	G	Weight (g)
NAPAT/YS-30-6-□(-T/O)	87.2	6	36	28	82
NAPAT/YS-30-15-□(-T/O)	96.2	15			87
NAPAT/YS-30-30-□(-T/O)	133.2	30	58	50	112

※□ in the table indicates the cup material.  
※ The weight value is when NBR (Nitrile rubber) / without connector selected.

Common Specifications

Connector Weight(g)	
Symbol	Tube O.D φ 6
T	1.5
O	4.0

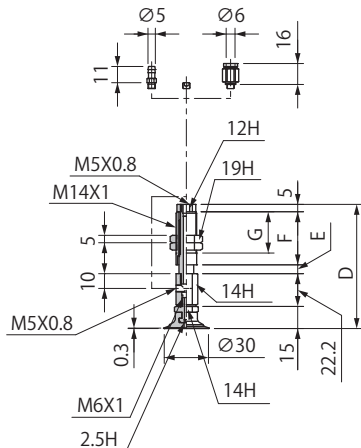


# NAPATS·YS Cup with Spring Fitting

## Dimensions

(mm)

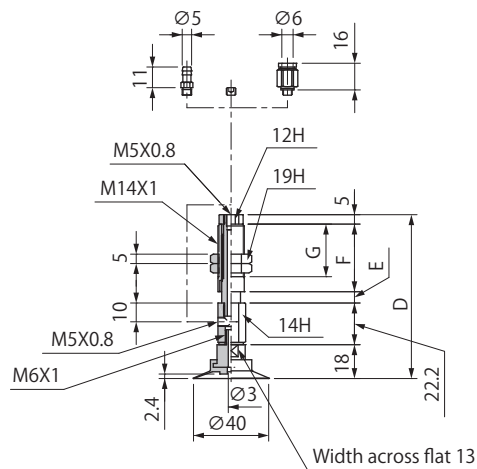
### NAPAT/YS-30B



Model number	D	E	F	G	Weight (g)
NAPAT/YS-30B-6-□ (-T/O)	84.2	6	36	28	82
NAPAT/YS-30B-15-□ (-T/O)	93.2	15			87
NAPAT/YS-30B-30-□ (-T/O)	130.2	30	58	50	112

※□ in the table indicates the cup material.  
※ The weight value is when NBR (Nitrile rubber) / without connector selected.

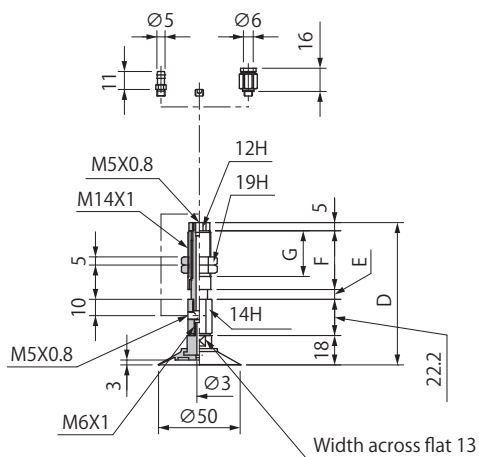
### NAPAT/YS-40



Model number	D	E	F	G	Weight (g)
NAPAT/YS-40-6-□ (-T/O)	87.2	6	36	28	82
NAPAT/YS-40-15-□ (-T/O)	96.2	15			87
NAPAT/YS-40-30-□ (-T/O)	133.2	30	58	50	112

※□ in the table indicates the cup material.  
※ The weight value is when NBR (Nitrile rubber) / without connector selected.

### NAPAT/YS-50



Model number	D	E	F	G	Weight (g)
NAPAT/YS-50-6-□ (-T/O)	87.2	6	36	28	83
NAPAT/YS-50-15-□ (-T/O)	96.2	15			88
NAPAT/YS-50-30-□ (-T/O)	133.2	30	58	50	113

※□ in the table indicates the cup material.  
※ The weight value is when NBR (Nitrile rubber) / without connector selected.

## Common Specifications

Connector Weight(g)	
Symbol	Tube O.D φ 6
T	1.5
O	4.0

02

Suction Cup

PA

PB

PC

PCD

PD

PF

PFO

PH

PJ

CORE

PK2

PK2B

PK2L

PL

PN

PN-B

PP

PQ

PR

PU

PW

RA

SM

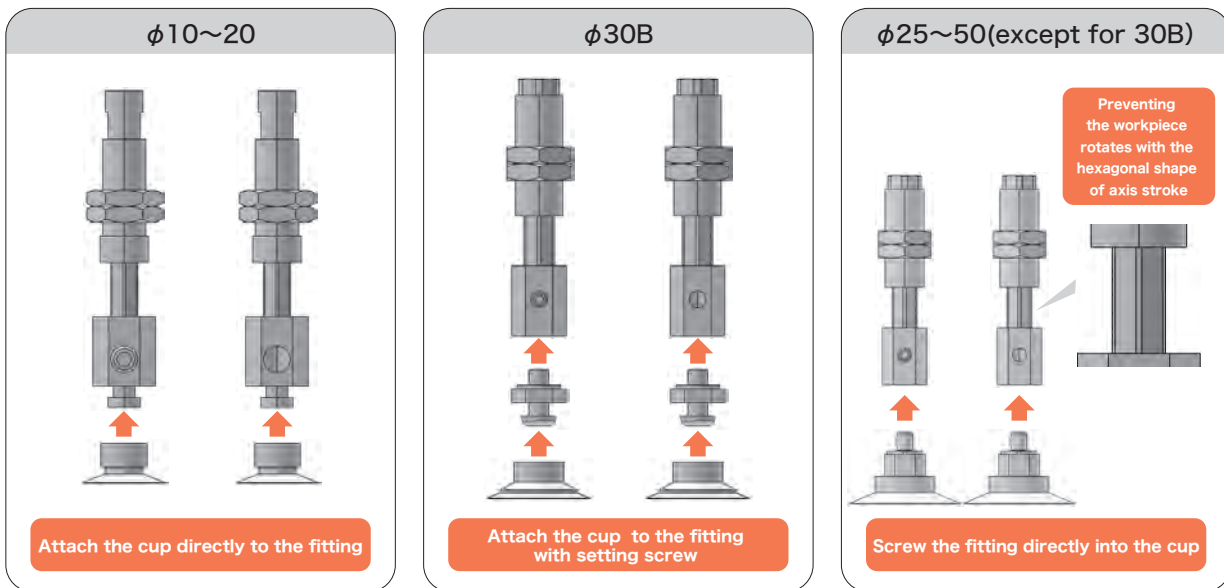
TN

## NAPATH·YH Cup with Non-rotation Spring Fitting

Suction Cup  
Cup with Thin Lip



Consisting of fitting, setting screw, suction cup.



### How to Order

NAPA **T** H - **10A-3** - **N** - **T**

① Vacuum Port

T	Top
Y	Side

② Cup Size - Stroke (mm)

Symbol	Cup size Stroke	Symbol	Cup size Stroke	Symbol	Cup size Stroke
10A-3	φ 10-3	20A-3	φ 20-3	30B-6	φ 30-6
10A-10	φ 10-10	20A-10	φ 20-10	30B-15	φ 30-15
10A-15	φ 10-15	20A-15	φ 20-15	30B-30	φ 30-30
10B-3	φ 10-3	20B-3	φ 20-3	40-6	φ 40-6
10B-10	φ 10-10	20B-10	φ 20-10	40-15	φ 40-15
10B-15	φ 10-15	20B-15	φ 20-15	40-30	φ 40-30
15A-3	φ 15-3	25-6	φ 25-6	50-6	φ 50-6
15A-10	φ 15-10	25-15	φ 25-15	50-15	φ 50-15
15A-15	φ 15-15	25-30	φ 25-30	50-30	φ 50-30
15B-3	φ 15-3	30-6	φ 30-6		
15B-10	φ 15-10	30-15	φ 30-15		
15B-15	φ 15-15	30-30	φ 30-30		

③ Cup Rubber Material

Symbol	Material
N	NBR(Nitrile rubber)
S	Silicone rubber
F	Fluorine rubber
NE	Conductive NBR (Nitrile rubber)
SE	Conductive silicone rubber

※ Please consult with us for other material.

④ Connector

Blank	N/A
T	Barb
O	Push-in

02 Suction Cup

PA

PB

PC

PCD

PD

PF

PFO

PH

PJ

CORE

PK2

PK2B

PK2L

PL

PN

PN-B

PP

PQ

PR

PU

PW

RA

SM

TN

## Spring Specifications

Cup Size	Unit	φ10~20			φ25~50		
Stroke	mm	3	10	15	6	15	30
Spring load at 0 stroke	N	0.61		0.64	2.45		2.9
Spring load at full stroke	N	0.77	1.17		3.43	4.9	5.88

## Combination Table

Model number	Cup	Setting screw	Fitting	Piping specifications		
				Without connector · Blank	Barb connector · T	Push-in connector · O
NAPA○H-10A-3-□ (-T/O)	PAG-10A-□	Attach the cup directly to the fitting	NAPF○H-5A-3-K (-T/O)	M5X0.8 (Female)	φ 6 X 4	
NAPA○H-10A-10-□ (-T/O)			NAPF○H-5A-10-K (-T/O)			
NAPA○H-10A-15-□ (-T/O)			NAPF○H-5A-15-K (-T/O)			
NAPA○H-10B-3-□ (-T/O)	PAG-10B-□		NAPF○H-5A-3-K (-T/O)			
NAPA○H-10B-10-□ (-T/O)			NAPF○H-5A-10-K (-T/O)			
NAPA○H-10B-15-□ (-T/O)			NAPF○H-5A-15-K (-T/O)			
NAPA○H-15A-3-□ (-T/O)	PAG-15A-□		NAPF○H-5A-3-K (-T/O)			
NAPA○H-15A-10-□ (-T/O)			NAPF○H-5A-10-K (-T/O)			
NAPA○H-15A-15-□ (-T/O)			NAPF○H-5A-15-K (-T/O)			
NAPA○H-15B-3-□ (-T/O)	PAG-15B-□		NAPF○H-5A-3-K (-T/O)			
NAPA○H-15B-10-□ (-T/O)			NAPF○H-5A-10-K (-T/O)			
NAPA○H-15B-15-□ (-T/O)			NAPF○H-5A-15-K (-T/O)			
NAPA○H-20A-3-□ (-T/O)	PAG-20A-□		NAPF○H-5A-3-K (-T/O)			
NAPA○H-20A-10-□ (-T/O)			NAPF○H-5A-10-K (-T/O)			
NAPA○H-20A-15-□ (-T/O)			NAPF○H-5A-15-K (-T/O)			
NAPA○H-20B-3-□ (-T/O)	PAG-20B-□	NAPF○H-5A-3-K (-T/O)				
NAPA○H-20B-10-□ (-T/O)		NAPF○H-5A-10-K (-T/O)				
NAPA○H-20B-15-□ (-T/O)		NAPF○H-5A-15-K (-T/O)				
NAPA○H-25-6-□ (-T/O)	PAG-25-□	Screw the fitting directly into the male screw in the cup	NAPA○H-25-6-K (-T/O)			
NAPA○H-25-15-□ (-T/O)			NAPA○H-25-15-K (-T/O)			
NAPA○H-25-30-□ (-T/O)			NAPA○H-25-30-K (-T/O)			
NAPA○H-30-6-□ (-T/O)	PAG-30-□		NAPA○H-25-6-K (-T/O)			
NAPA○H-30-15-□ (-T/O)			NAPA○H-25-15-K (-T/O)			
NAPA○H-30-30-□ (-T/O)			NAPA○H-25-30-K (-T/O)			
NAPA○H-30B-6-□ (-T/O)	PAG-30B-□		TN-PA-30-M6	NAPA○H-25-6-K (-T/O)		
NAPA○H-30B-15-□ (-T/O)			NAPA○H-25-15-K (-T/O)			
NAPA○H-30B-30-□ (-T/O)			NAPA○H-25-30-K (-T/O)			
NAPA○H-40-6-□ (-T/O)	PAG-40-□	Screw the fitting directly into the male screw in the cup	NAPA○H-25-6-K (-T/O)			
NAPA○H-40-15-□ (-T/O)			NAPA○H-25-15-K (-T/O)			
NAPA○H-40-30-□ (-T/O)			NAPA○H-25-30-K (-T/O)			
NAPA○H-50-6-□ (-T/O)	PAG-50-□		NAPA○H-25-6-K (-T/O)			
NAPA○H-50-15-□ (-T/O)			NAPA○H-25-15-K (-T/O)			
NAPA○H-50-30-□ (-T/O)			NAPA○H-25-30-K (-T/O)			

※□ in the table indicates the cup material.

※○ in the table indicates the vacuum port (T or Y).

02

Suction Cup

PA

PB

PC

PCD

PD

PF

PFO

PH

PJ

CORE

PK2

PK2B

PK2L

PL

PN

PN-B

PP

PQ

PR

PU

PW

RA

SM

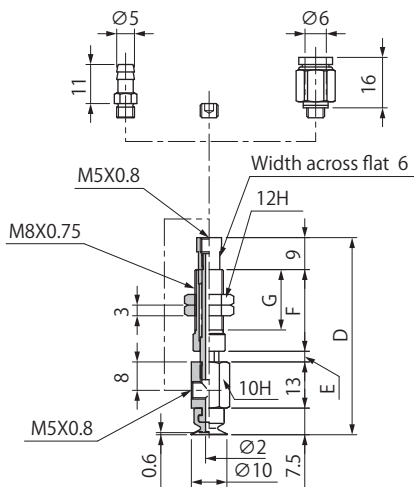
TN

## NAPATH·YH Cup with Non-rotation Spring Fitting

### Dimensions

(mm)

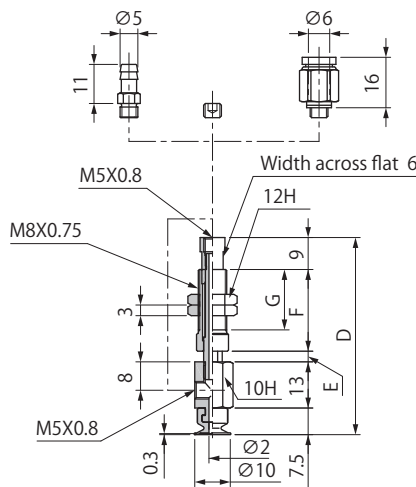
#### NAPAT/YH-10A



Model number	D	E	F	G	Weight (g)
NAPAT/YH-10A-3-□(-T/O)	55.5	3	23	17	18.5
NAPAT/YH-10A-10-□(-T/O)	62.5	10			19
NAPAT/YH-10A-15-□(-T/O)	75	15	30.5	24.5	22

※□ in the table indicates the cup material.  
 ※ The weight value is when NBR (Nitrile rubber) / without connector selected.

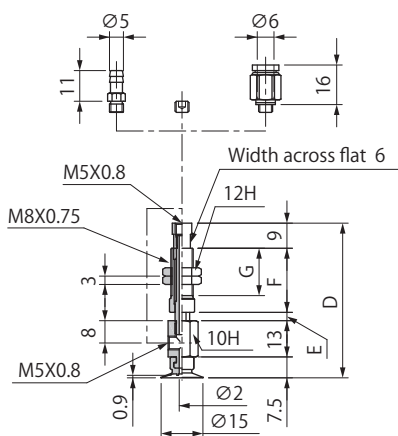
#### NAPAT/YH-10B



Model number	D	E	F	G	Weight (g)
NAPAT/YH-10B-3-□(-T/O)	55.5	3	23	17	18.5
NAPAT/YH-10B-10-□(-T/O)	62.5	10			19
NAPAT/YH-10B-15-□(-T/O)	75	15	30.5	24.5	22

※□ in the table indicates the cup material.  
 ※ The weight value is when NBR (Nitrile rubber) / without connector selected.

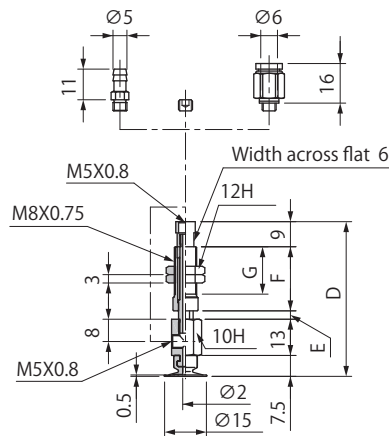
#### NAPAT/YH-15A



Model number	D	E	F	G	Weight (g)
NAPAT/YH-15A-3-□(-T/O)	55.5	3	23	17	18.5
NAPAT/YH-15A-10-□(-T/O)	62.5	10			19
NAPAT/YH-15A-15-□(-T/O)	75	15	30.5	24.5	22

※□ in the table indicates the cup material.  
 ※ The weight value is when NBR (Nitrile rubber) / without connector selected.

#### NAPAT/YH-15B



Model number	D	E	F	G	Weight (g)
NAPAT/YH-15B-3-□(-T/O)	55.5	3	23	17	18.5
NAPAT/YH-15B-10-□(-T/O)	62.5	10			19
NAPAT/YH-15B-15-□(-T/O)	75	15	30.5	24.5	22

※□ in the table indicates the cup material.  
 ※ The weight value is when NBR (Nitrile rubber) / without connector selected.

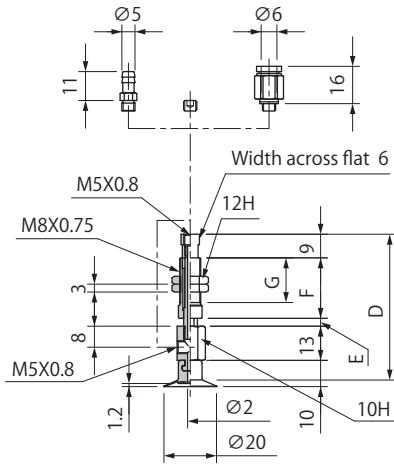
### Common Specifications

Connector Weight(g)	
Symbol	Tube O.D φ 6
T	1.5
O	4.0

Dimensions

(mm)

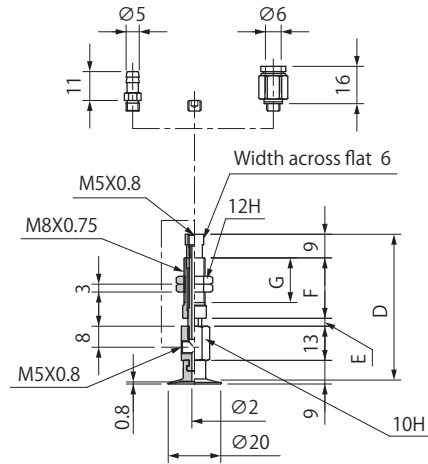
NAPAT/YH-20A



Model number	D	E	F	G	Weight (g)
NAPAT/YH-20A-3-□ (-T/O)	58	3	23	17	18.5
NAPAT/YH-20A-10-□ (-T/O)	65	10			19
NAPAT/YH-20A-15-□ (-T/O)	77.5	15	30.5	24.5	22

※□ in the table indicates the cup material.  
※ The weight value is when NBR (Nitrile rubber) / without connector selected.

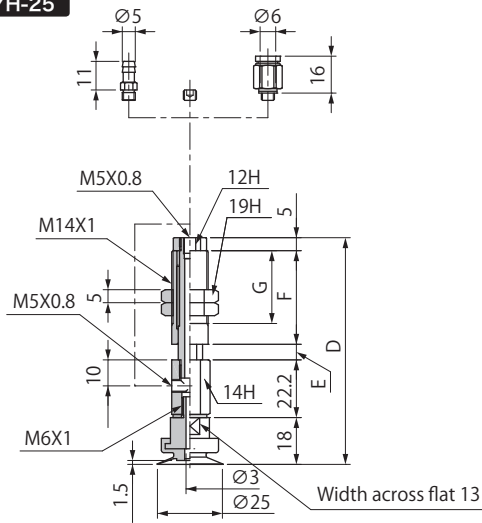
NAPAT/YH-20B



Model number	D	E	F	G	Weight (g)
NAPAT/YH-20B-3-□ (-T/O)	57	3	23	17	18.5
NAPAT/YH-20B-10-□ (-T/O)	64	10			19
NAPAT/YH-20B-15-□ (-T/O)	76.5	15	30.5	24.5	22

※□ in the table indicates the cup material.  
※ The weight value is when NBR (Nitrile rubber) / without connector selected.

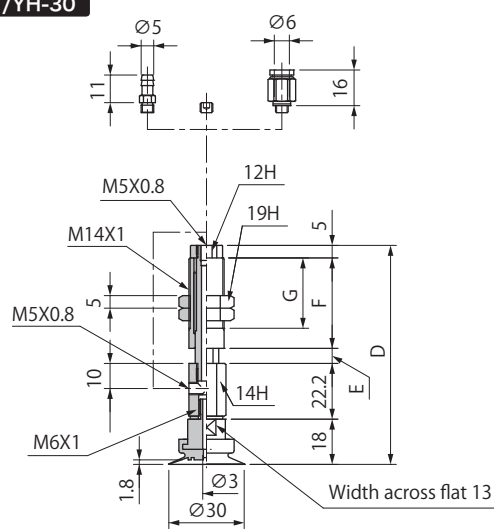
NAPAT/YH-25



Model number	D	E	F	G	Weight (g)
NAPAT/YH-25-6-□ (-T/O)	87.2	6	36	28	79
NAPAT/YH-25-15-□ (-T/O)	96.2	15			84
NAPAT/YH-25-30-□ (-T/O)	133.2	30	58	50	108

※□ in the table indicates the cup material.  
※ The weight value is when NBR (Nitrile rubber) / without connector selected.

NAPAT/YH-30



Model number	D	E	F	G	Weight (g)
NAPAT/YH-30-6-□ (-T/O)	87.2	6	36	28	80
NAPAT/YH-30-15-□ (-T/O)	96.2	15			85
NAPAT/YH-30-30-□ (-T/O)	133.2	30	58	50	109

※□ in the table indicates the cup material.  
※ The weight value is when NBR (Nitrile rubber) / without connector selected.

Common Specifications

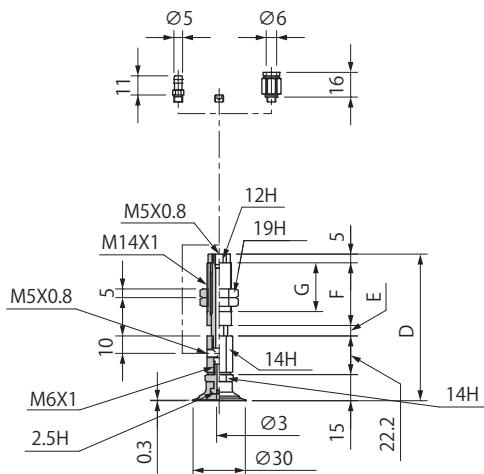
Symbol	Connector Weight(g)	
	Tube O.D φ 6	
T	1.5	
O	4.0	

## NAPATH·YH Cup with Non-rotation Spring Fitting

### Dimensions

(mm)

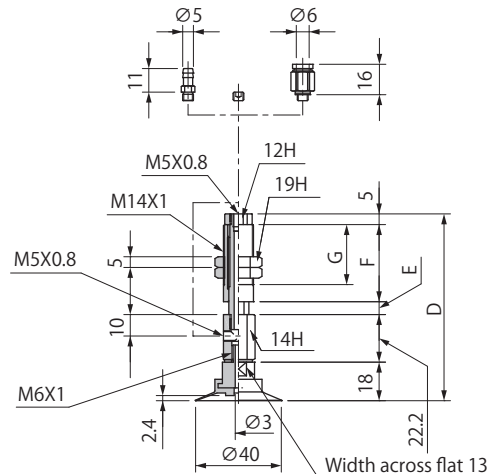
#### NAPAT/YH-30B



Model number	D	E	F	G	Weight (g)
NAPAT/YH-30B-6-□(-T/O)	84.2	6	36	28	80
NAPAT/YH-30B-15-□(-T/O)	93.2	15			85
NAPAT/YH-30B-30-□(-T/O)	130.2	30	58	50	109

※□ in the table indicates the cup material.  
※ The weight value is when NBR (Nitrile rubber) / without connector selected.

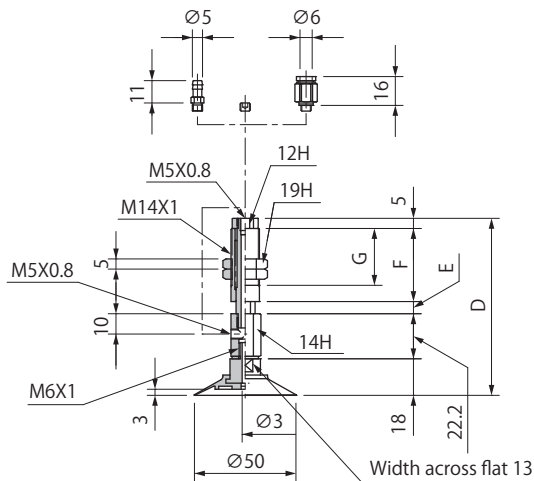
#### NAPAT/YH-40



Model number	D	E	F	G	Weight (g)
NAPAT/YH-40-6-□(-T/O)	87.2	6	36	28	80
NAPAT/YH-40-15-□(-T/O)	96.2	15			86
NAPAT/YH-40-30-□(-T/O)	133.2	30	58	50	110

※□ in the table indicates the cup material.  
※ The weight value is when NBR (Nitrile rubber) / without connector selected.

#### NAPAT/YH-50



Model number	D	E	F	G	Weight (g)
NAPAT/YH-50-6-□(-T/O)	87.2	6	36	28	81
NAPAT/YH-50-15-□(-T/O)	96.2	15			87
NAPAT/YH-50-30-□(-T/O)	133.2	30	58	50	111

※□ in the table indicates the cup material.  
※ The weight value is when NBR (Nitrile rubber) / without connector selected.

### Common Specifications

Connector Weight(g)	
Symbol	Tube O.D φ 6
T	1.5
O	4.0