



Oval type new appearance!

○ Lineup **60×20** **80×30** **100×40**

○ Made with TPU (Thermoplastic polyurethane) material having high durability.

Wear resistant 10 times longer than conventional material
 (※10 times less than NBR on the list of
 ※1 Taper abrasion loss)

Oil resistance Excellent resistance against oil

Weather resistance Excellent resistance against ozone, long life circle

TPU physical characteristics comparison

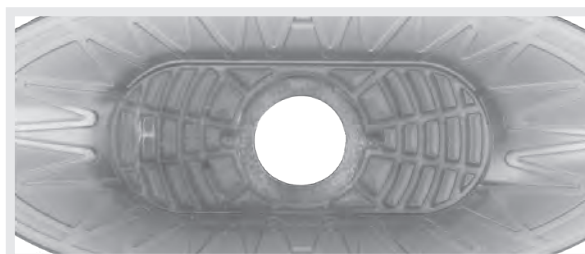
Type	NBR	TPU
Hardness (A/s)	55	85
Tensile strength TB(MPa)	13.5	46
Tear strength TR(N/mm)	34.8	95
Growth EB(%)	630	570
※1 Taber abrasion loss(mg) <small>(Reference value)</small>	241	24
※2 Wear resistant	△~○	◎
※2 Aging resistance	○	○
※2 Ozone resistance	×	◎
※2 Oil resistance	○	◎

※1. JIS K7311...wear ring :H-22, load 9.8N, rotational speed: 1000 rotation.


※2. It's a specifications excerpt of each company, not comparison of NBR and TPU.

○ Patterned cup surface prevents sideslip on workpieces with an oily surface.

Sheet metal and other workpieces with the oily surface can be picked up and transported!



Suction Cup

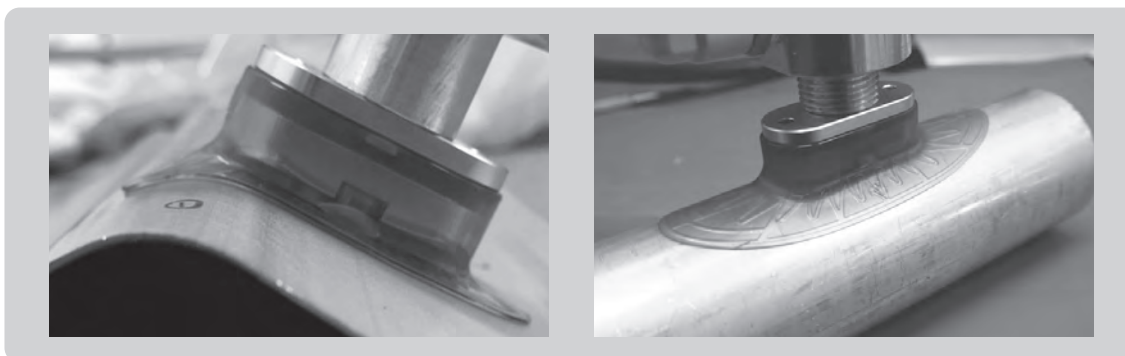
PK2L		Cup size (mm) 60 X 20, 80 X 30, 100 X 40	P.383
------	---	---	-------

Fitting

Type	Applicable cup size (mm)	Stroke (mm)	Vacuum port	Piping · Connector	Page
Cup with fixed fitting PK2L- □ - M	60 X 20, 80 X 30, 100 X 40	N/A	Top	Male screw	P.383
Cup with fixed fitting PK2L- □ -G2F	60 X 20, 80 X 30, 100 X 40	N/A	Top	Female screw	P.383

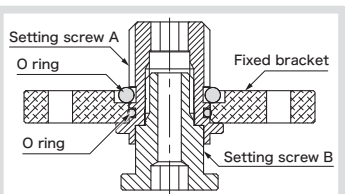
Suction Cup Selection Guide → P.163

○ Suitable for handling long and narrow workpiece shapes (flame·pipe, etc.)

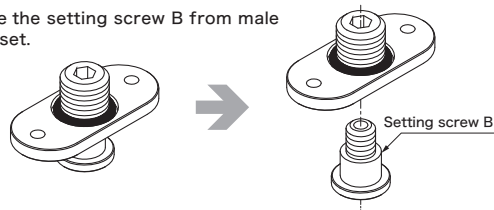


Male Screw Assembly Method

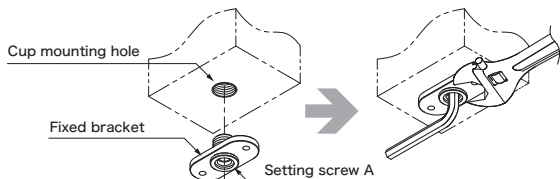
Construction



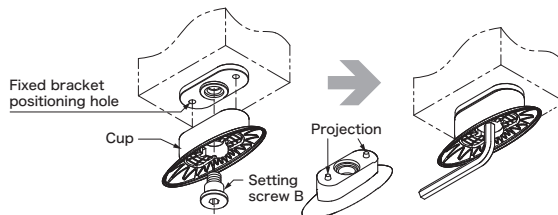
① Remove the setting screw B from male screw set.



② Adjusting the angle of fixed bracket, screw the setting screw A to cup mounting hole.



③ Matching the fixed bracket positioning hole and projection of cup. Fix the cup with setting screw B that removed at ①.



⚠ Recommended torque: 12N·m
Too higher torque may cause deformation of hexagon socket.
Tighten the setting screw A while holding the fixed bracket with a tool to avoid the position aberration.

⚠ Recommended torque
60×20/80×30: 5N·m 100×40: 10N·m
Deformation or retinue may occur with higher tightening torque above ②.

PK2L High Durability Cup/Oval Type

How to Order

• Suction Cup

PK2L — 60X20 — T

① Cup Size
(Long diameter×Short diameter) mm

Symbol	Cup size
60X20	60X20
80X30	80X30
100X40	100X40

Cup Rubber Material
TPU

• Cup with Fixed Fitting

PK2L — 60X20 — T — M10

① Cup Size
(Long diameter×Short diameter)
mm

Symbol	Cup size
60X20	60X20
80X30	80X30
100X40	100X40

Cup Rubber Material
TPU

② Screw Specifications

Symbol	Size
M10	M10X1.5 Male
M12	M12X1.75 Male
M16	M16X1.5 Male
G2F	G1/4 Female

• Fitting

PK2L — 60X20 — K — M10

① Applicable Cup Size (mm)

Symbol	Applicable cup size
60X20	60X20/80X30
100X40	100X40

Fitting

② Screw Specifications

Symbol	Size
M10	M10X1.5 Male
M12	M12X1.75 Male
M16	M16X1.5 Male
G2F	G1/4 Female

• Setting Screw

TN — PK2L — M6

Screw Specifications

Symbol	Size	Applicable cup size
M6	M6X1.0	60X20/80X30
M8	M8X1.25	100X40

※Please refer to P.503 for setting screw detailed specifications.

Cup Rubber Material Standard Specifications

Symbol	Material	Hardness (A/s)	Ambient temperature (°C)	Color
T	TPU	85	-10 ~ 70	Semitransparent pink

※ The material of insert is PA(Polyamide).

Fitting Specifications

Cup size		60X20 / 80X30 / 100X40			
Screws specifications		M10X1.5 Male	M12X1.75 Male	M16X1.5 Male	G1/4 Female
Material	Mounted screw	Carbon steel			Aluminum
	Fixed plate	Aluminum			
	Setting screw	Stainless			
	Packing	NBR			N/A

Combination Table

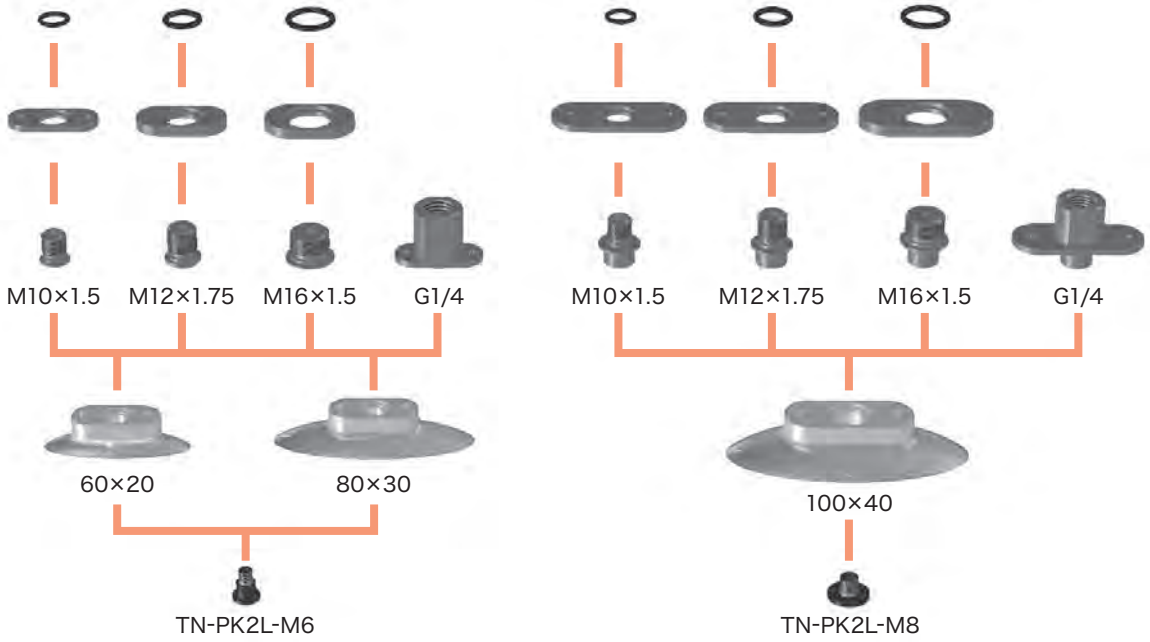
Model number	Cup	Setting screw	Fitting	Piping specifications	Recommended torque (N · m)
PK2L-60X20-T-M10	PK2L-60X20-T	TN-PK2L-M6	PK2L-60X20-K-M10	M10 X 1.5 Male	5
PK2L-80X30-T-M10	PK2L-80X30-T		PK2L-100X40-K-M10		
PK2L-100X40-T-M10	PK2L-100X40-T		PK2L-100X40-K-M10		
PK2L-60X20-T-M12	PK2L-60X20-T	TN-PK2L-M6	PK2L-60X20-K-M12	M12 X 1.75 Male	5
PK2L-80X30-T-M12	PK2L-80X30-T		PK2L-100X40-K-M12		
PK2L-100X40-T-M12	PK2L-100X40-T		PK2L-100X40-K-M12		
PK2L-60X20-T-M16	PK2L-60X20-T	TN-PK2L-M6	PK2L-60X20-K-M16	M16 X 1.5 Male	5
PK2L-80X30-T-M16	PK2L-80X30-T		PK2L-100X40-K-M16		
PK2L-100X40-T-M16	PK2L-100X40-T		PK2L-100X40-K-M16		
PK2L-60X20-T-G2F	PK2L-60X20-T	TN-PK2L-M6	PK2L-60X20-K-G2F	G1/4 Female	5
PK2L-80X30-T-G2F	PK2L-80X30-T		PK2L-100X40-K-G2F		
PK2L-100X40-T-G2F	PK2L-100X40-T		PK2L-100X40-K-G2F		

※ The recommended torque is only for metal-to-metal tightening.

PK2L High Durability Cup/Oval Type

Suction Cup
High Durability Cup/Oval Type

Cup · Setting Screw Combination Image



02

Suction Cup

PA

PB

PC

PCD

PD

PF

PFO

PH

PJ

CORE

PK2

PK2B

PK2L

PL

PN

PN-B

PP

PQ

PR

PU

PW

RA

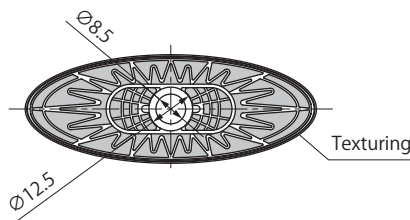
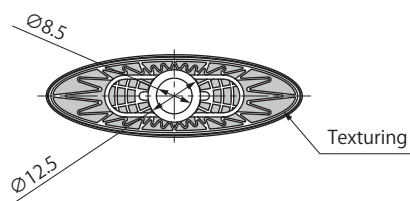
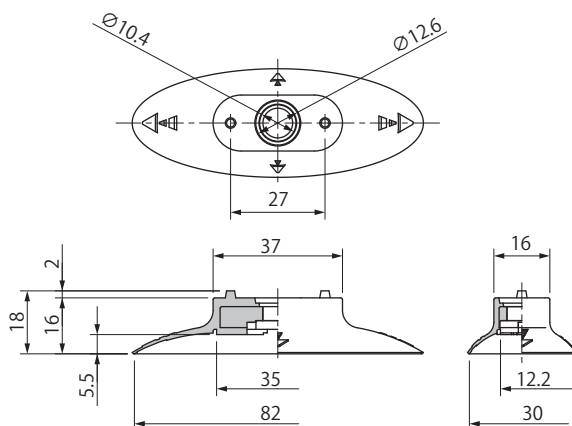
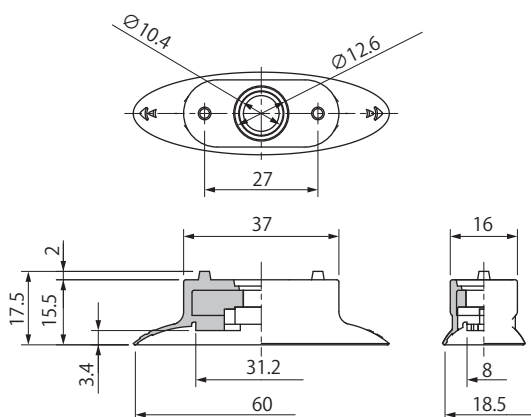
SM

TN

- PA
- PB
- PC
- PCD
- PD
- PF
- PFO
- PH
- PJ
- CORE
- PK2
- PK2B
- PK2L**
- PL
- PN
- PN-B
- PP
- PQ
- PR
- PU
- PW
- RA
- SM
- TN

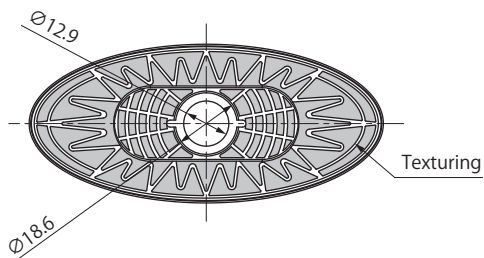
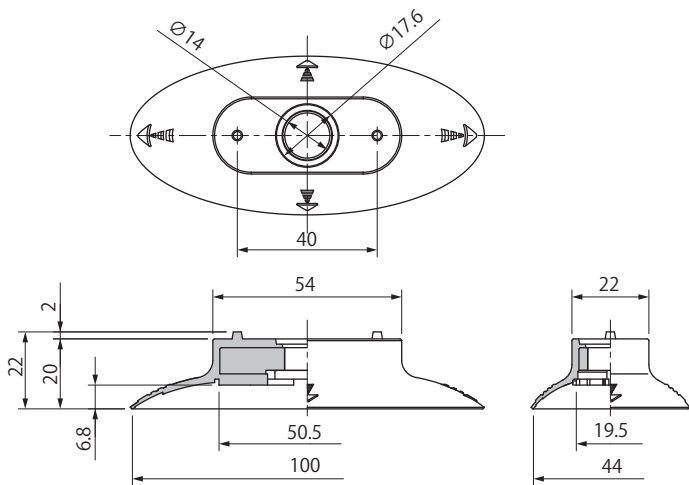
Dimensions

(mm)



Model number	Weight (g)
PK2L-60X20-T	6.3

Model number	Weight (g)
PK2L-80X30-T	7.4



Model number	Weight (g)
PK2L-100X40-T	18.8

PK2L High Durability Cup/Oval Type

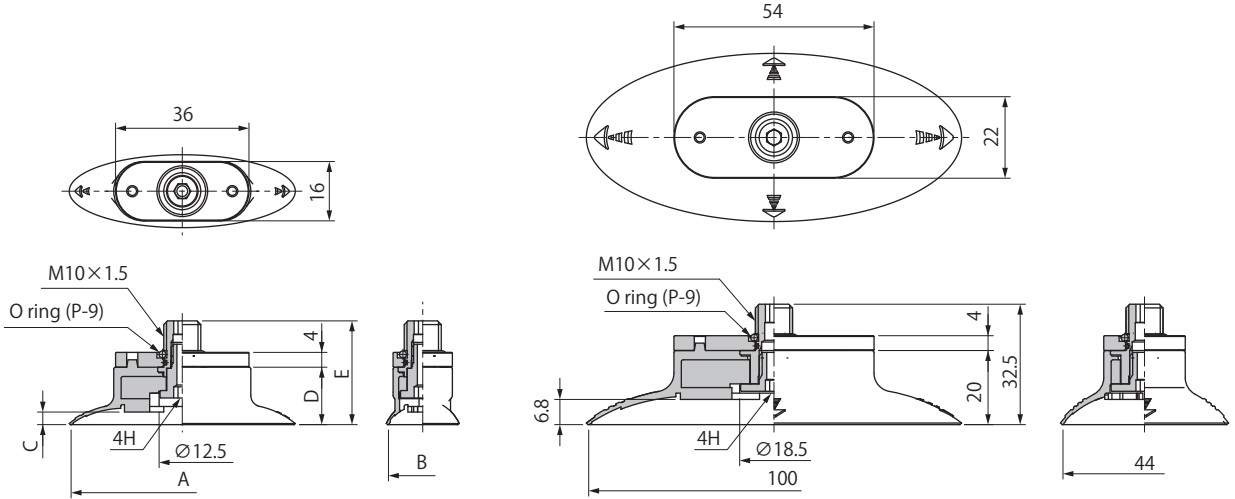
Suction Cup High Durability Cup/Oval Type

Dimensions

(mm)

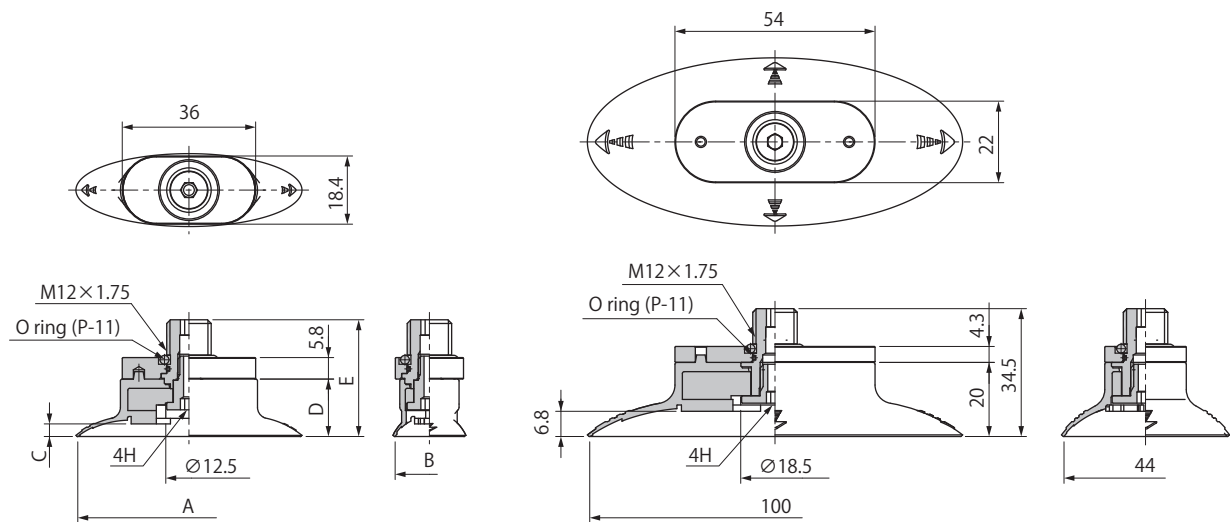
• Cup with Fixed Fitting

M10 Type



Model number	A	B	C	D	E	Weight (g)
PK2L-60X20-T-M10	60	18.5	3.4	15.5	28	20.2
PK2L-80X30-T-M10	82	30	5.5	16	28.5	21.3
PK2L-100X40-T-M10	-	-	-	-	-	45.9

M12 Type



Model number	A	B	C	D	E	Weight (g)
PK2L-60X20-T-M12	60	18.5	3.4	15.5	31.5	28.2
PK2L-80X30-T-M12	82	30	5.5	16	32	29.3
PK2L-100X40-T-M12	-	-	-	-	-	50.1

02
Suction Cup

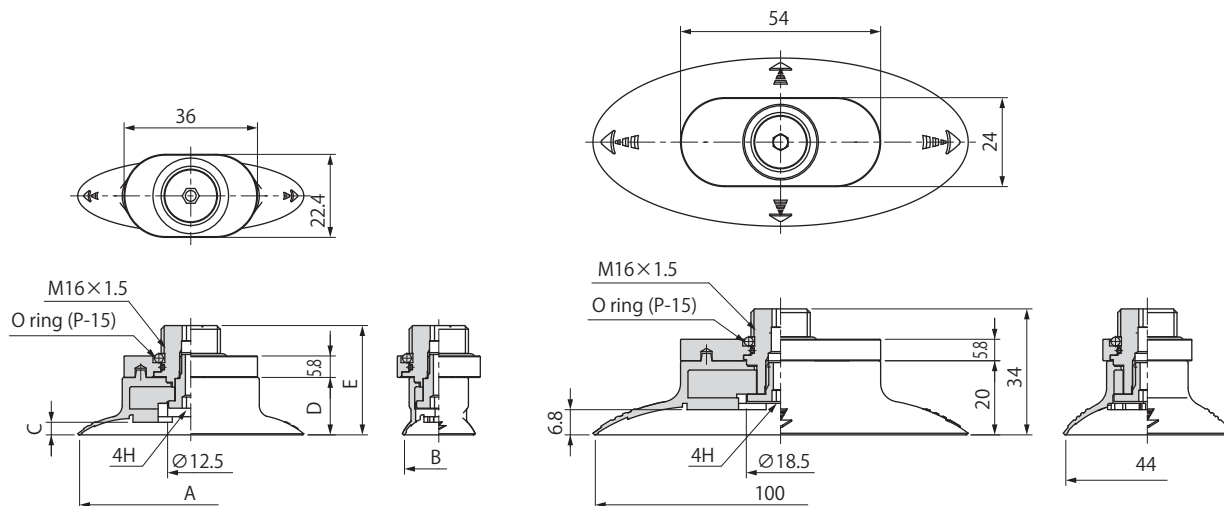
- PA
- PB
- PC
- PCD
- PD
- PF
- PFO
- PH
- PJ
- CORE
- PK2
- PK2B
- PK2L**
- PL
- PN
- PN-B
- PP
- PQ
- PR
- PU
- PW
- RA
- SM
- TN

Dimensions

(mm)

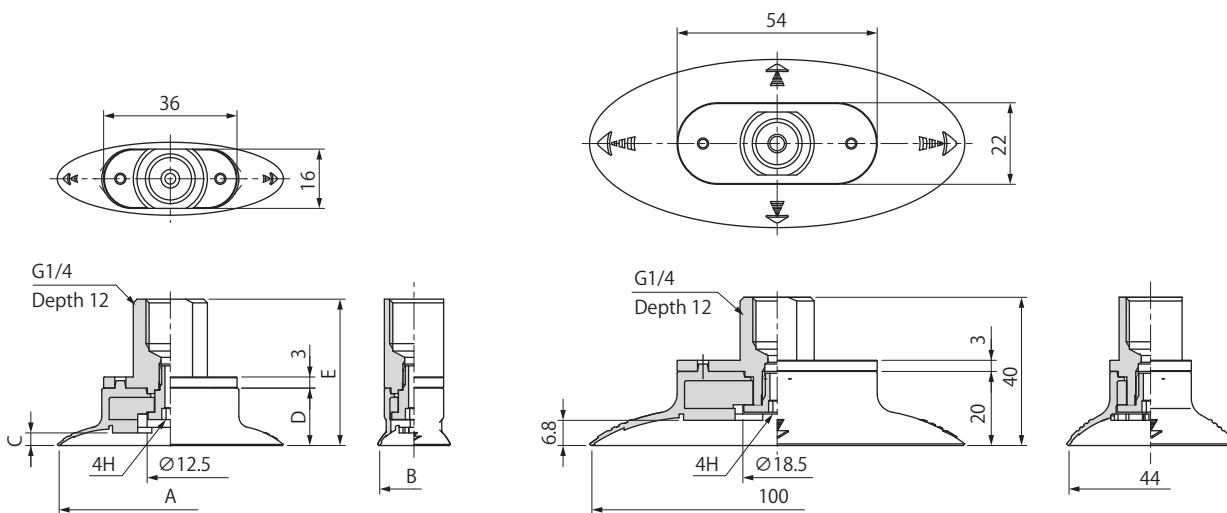
• Cup with Fixed Fitting

M16 Type



Model number	A	B	C	D	E	Weight (g)
PK2L-60X20-T-M16	60	18.5	3.4	15.5	29.5	36.3
PK2L-80X30-T-M16	82	30	5.5	16	30	37.4
PK2L-100X40-T-M16	-	-	-	-	-	63.4

G2F Type



Model number	A	B	C	D	E	Weight (g)
PK2L-60X20-T-G2F	60	18.5	3.4	15.5	39.5	25.3
PK2L-80X30-T-G2F	82	30	5.5	16	40	26.4
PK2L-100X40-T-G2F	-	-	-	-	-	43.3